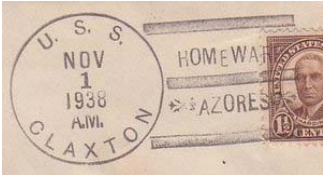




A Listing of Ports Visited by Navy and Coast Guard Ships.
For Information on Naval Cover Collecting, Visit: www.uscs.org.

Port Locations Letter "A" **Amazing how many places our ships have been!** www.uscs.org



"Homeward Azores"

Aamori Japan (Misspelled, correct: Aomori)	40.8N 140.7E	<i>Rockaway 9/48</i>
Aberdeen/Md	30.5N 76.2W	<i>Potomac 9/40</i>
Aberdeen Scotland	57.1N 2.1W	<i>Barker 7/27</i>
Aberdeen Washington	47.0N 123.8W	<i>Zane 7/36</i>
Academy Bay Galapagos	00.8N 90.3W	<i>Erie 12/38</i>
Acajulta Salvador	13.6N 89.8W	<i>Wilkes 1932</i>
Acapulco Mexico	16.8N 99.9W	<i>Memphis 8/36</i>
Acapulco/Mexico		<i>Fairfax 8/36</i>
Acupulca/Mexico (misspelled)		<i>San Francisco ?</i>
Adak Alaska	51.9N 176.7W	<i>Ramapo 6/34</i>
Adak Island		<i>Gannet 7/34</i>
Adak Island/Aleutians		<i>Kingfisher 5/34</i>
Adak Is/Aleutians Is		<i>Tanager 7/34</i>
Adak Isl/Alaska		<i>Kingfisher 5/35</i>
Adak Strait	51.8N 177.0W	<i>Kingfisher 7/35</i>
Aden Arabia	12.8N 45.0E	<i>Sacramento 3/39</i>
Agadir Morocco	30.4N 09.6W	<i>Hull 6/35</i>
Aggatu Island (Correct spelling: Agattu)	52.3N 173.6E	<i>Quail 6/34</i>
Ajaccio Corsica	41.9N 08.7E	<i>Claxton 2/38</i>
Ajaccio/Corsica		<i>Kane 2/37</i>
Akutan/Alaska	54.1N 165.8W	<i>Pollack 4/38</i>
Akutan Island		<i>Gannet 6/35</i>
Alacrity Bay China	30.6N 123.7E	<i>Bulmer 4/28</i>
Alameda/Calif	38.3N 122.2W	<i>Sirius 2/40</i>
Alaskan/Cruise	(Unspecified)	<i>Nautilus 7/34</i>
Alaskan/Survey	(Unspecified)	<i>Kingfisher 8/33</i>
Alaskan/Waters	(Unspecified)	<i>Wright 7/34</i>
Albany NY/Navy Day	42.7N 73.8W	<i>Fairfax 10/34</i>
Aleutian Islands/Alaska	52 to 55N 162-172W	<i>Swallow 4/34</i>
Aleutians/Uvalde	63.6N 154.5W	
Aleutian Survey Exp.		<i>Argonne 7/33</i>
Alexandria Egypt	31.3N 29.9E	<i>Sacramento 3/39</i>
Alexandria Va	38.8N 77.0W	<i>Constitution 5/32</i>
Algiers Algeria	36.8N 03.0E	<i>Badger 3/39</i>
Algiers/Algeria		<i>Claxton 8/38</i>
/Algiers		<i>Osborne 4/26</i>

Algiers Louisiana	29.9N	90.0W	<i>Moffett</i> 4/37
Alicante Spain	39.3N	00.5W	<i>Raleigh</i> 5/37
Alvarado Mexico	18.8N	95.8W	<i>Paducah</i> 1914
Amaknak Island	53.9N	166.5W	
Amapala Honduras	13.3N	87.7W	<i>Maryland</i> 11/28
Amapala/Honduras			<i>Fairfax</i> 7/36
Amatignak Island (Alaska)	51.3N	179.1W	<i>Oglala</i> 7/35
Amchitka/Alaska	51.6N	179.0W	
Amichitka/Aleutians (misspelled)			<i>Kingfisher</i> 6/34
Amchitka I/Alaska			<i>Oglala</i> 6/35
Amoy China (now Xiamen)	24.5N	118.0E	<i>Marblehead</i> 5/38
Amoy/China			<i>Beaver</i> 4/30
Amsterdam Holland	52.4N	04.9E	<i>New Orleans</i> 6/34
Amsterdam/Netherlands			<i>Winslow</i> 5/37
Anacortes Washington	48.5N	122.7W	<i>Constitution</i> 7/33
Ancon/Canal Zone	08.9N	79.6W	<i>Constitution</i> ?
Balboa & Ancon/Canal Zone			<i>Chester</i> 5/36
Anderson Bay/Unalaska	53.9N	166.5W	<i>Porpoise</i> 4/38
Andicora/Venezuela (Adicora)	11.9N	69.8W	<i>Bushnell</i> 12/38
Andrews Bay/Alaska	51.9N	176.7W	<i>Quail</i> 8/34
Anking/China	30.5N	117.1E	<i>Monocacy</i> 12/34
Ankow/China (Possibly Hankow?)			<i>Guam</i> 10/34
Annapolis/Maryland	39.0N	76.5W	<i>Reina Mercedes</i> 3/32
Annapolis/MD			<i>Erie</i> 7/37
Annapolis, MD			<i>Indianapolis</i> 1/33
Naval Academy/Annapolis Maryland			<i>Babbitt</i> ?
Annapolis Roads (as in anchored)			<i>Wyoming</i> 8/35
See: Naval/Academy			
Antafagasta/Chile (Antofagasta)	23.6S	70.4W	<i>Maryland</i> 12/38
Antarctica	65 to 78S	110 to 150W	
Antilla/Cuba	20.8N	75.7W	<i>Ellis</i> 9/23
Antwerp/Belgium	51.2N	04.4E	<i>Erie</i> 11/36
Aomori/Japan	40.8N	140.7E	<i>Crockett</i> 9/45
Apia Samoa (as Passing/--)	13.8S	171.8W	<i>Trenton</i> 1/38
Apra/Guam	13.4N	144.7E	<i>Pensacola</i> 6/40
Apra Harbor/Guam M.I.			<i>Chaumont</i> 5/39
Apra*Harbor/Guam*M I*			<i>Chaumont</i> 6/34
Apra Harbor/Guam MI			<i>Chaumont</i> 1/37
Apra Harbor/Guam**M I			<i>Chaumont</i> 1/35
Apra Harbor/Guam			<i>Penguin</i> 6/38
Apra Harbor/Guam (no bars)			<i>Penguin</i> 6/36
Apra Harbor/Guam MI (no bars)			<i>Penguin</i> 9/34
Apra Harbor/Guam M.I. (no bars)			<i>Penguin</i> 3/37
Apra Harbor/Guam, M.I.			<i>Penguin</i> 2/34
Port Apra/Guam			<i>Henderson</i> 11/37
Aransas Gulf/of Mexico	28.0N	97.0W	<i>Moffett</i> 5/37
Aransas/Pass /Tex.			<i>Decatur</i> 5/37
Arboletes/Colombia	08.8N	76.5W	<i>Bushnell</i> 8/38
Archangel/Russia	64.5N	40.6E	<i>Des Moines</i> 7/19
Arena Bay/Panama	07.3N	80.9W	<i>Hannibal</i> 6/34
Argentia/NFLD	47.3N	54.0W	<i>Bristol</i> 3/42
Arica/Chile	18.5N	70.3W	<i>Cleveland</i> 4/26
Armuelles/Panama (Pto Armuelles)	08.3N	82.9W	<i>Erie</i> 7/39

Arroyos/Cuba	22.3N	84.5W	<i>Hannibal</i> 2/29
Aruba/Neth. W.I.	12.5N	70.0W	<i>Saury</i> 7/38
Aruba Dutch/West Indies			<i>Moffett</i> 2/40
Asiatic Fleet			<i>Paul Jones</i> 4/31
Asiatic Fleet/Chefoo			<i>Alden</i> 8/37
Asiaticfleet/Chefoo-China (Misspelled)			<i>Alden</i> 8/38
Asiatic Fleet/Shanghai			<i>Bulmer</i> 9/37
Asiatic Fleet/Philippines			<i>Alden</i> 10/38
Asiaticfleet/Manila P,I			<i>Alden</i> 1/38
Asiatic Station			<i>Sacramento</i> 5/34
Asiatic/Station/Manila/P.I.	14.6N	121.0E	<i>Edsall</i> 12/37
Asiatic Waters (as US Fleet/Asiatic Waters)			<i>Tutuila</i> 9/41
Astoria/Oregon	46.2N	123.8W	<i>Swallow</i> 8/35
Asuksak Island	51.9N	176.1W	<i>Swallow</i> 8/34
Athens/Greece	38.0N	23.7E	<i>Chester</i> 9/30
Atka/Alaska	52.2N	174.7W	
Atka/Aleutian Is.			
Atlantic Ocean			
On Atlantic/Sea Patrol			<i>Vincennes</i> 9/39
At Sea (Innumerable in conjunction with many slogans also in dial.)			
Attu/Aleutian Is	52.8N	173.2E	
Attu Isl/Alaska			<i>Kingfisher</i> 5.35
Auckland/New Zealand	36.9S	174.8E	<i>Louisville</i> 3/38
Auckland/New Zeland (misspelled)			<i>Preston</i> ?
Auk Bay/Alaska (Correct: Auke Bay)	58.4N	134.6W	<i>Salt Lake City</i> 7/32
Australia (as En Route)			<i>Astoria</i> 8/34
Aux Cayes/Haiti (Les Cayes)	18.2N	73.7W	<i>Pollack</i> 1/39
Avalon/Calif (Santa Catalina Is.)	33.4N	118.4W	<i>Constitution</i> 11/33
Avolon/Calif (Misspelling)			<i>Richmond</i> 8/36
Avis Island (Andaman & Nicobar Islands)	11.7N	92.6E	<i>Houston</i> 2/39
Azores/Isle	38.5N	28.0W	<i>Leonidas</i> 7/19
Homeward/Azores			<i>Claxton</i> 11/38
At Sea Off/Azores Is.			<i>Wyoming</i> 8/37

Port Locations Letter "B" Be a "Booster" of Naval Cover Collecting and visit www.uscs.org



"Leaving Boston Mass"

Bahia/Brazil (Salvador de Bahia)	13.0S	38.5W	<i>Lamson</i> 1/37
Bahia Honda/Panama	09.8N	81.6W	<i>Gannet</i> 5/36
Baie De/Cijon Fr.			<i>Raleigh</i> 10/37
Baker/Island (Phoenix Islands)	00.2N	176.5W	<i>Astoria</i> 9/34
Balabac/Straits (Philippines)	08.0N	117.0E	<i>Augusta</i> 11/35
Balboa Bay/Alaska	56.0N	160.6W	<i>Porpoise</i> 4/38
Balboa, Calif	33.6N	117.9W	<i>Chester</i> 7/33
Balboa/Canal Zone	09.0N	79.5W	<i>Bruce</i> 1/29
Balboa/Panama C.Z.			<i>Whitney</i> 3/26
Balboa/C.Z.			<i>Erie</i> 9/39
Balboa C.Z./Panama			<i>Rail</i> 3/23
Balboa/Culebra Is.			<i>(Unknown)</i>
Balboa Heights			<i>C-5</i> 5/19

Navy Day/Balboa C. Z.			<i>Fairfax C. Z. ?</i>
Anchored/Balboa, C.Z.			<i>Lexington 4/34</i>
First Day/Balboa CZ			<i>Northampton 4/34</i>
COMSPERON/Balboa C.Z.			<i>Trenton 10/35</i>
Bali the/Last Paradise	08.5S	115E	<i>Asiatic Fleet 12/33</i>
Balik Papan/Borneo	01.3S	116.7E	<i>Pecos 3/37</i>
Baltic/Sea	58.5N	19.9W	<i>Minneapolis 8/34</i>
Baltimore/Maryland	39.3N	76.6W	<i>Jacob Jones ?</i>
Baltimore/Md			<i>Edwards 8/40</i>
Banes Bay/Cuba	21.0N	75.5W	<i>McFarland 10/33</i>
Bangkok/Siam	13.7N	100.7E	<i>Augusta 10/35</i>
Bangor Maine	44.8N	68.8W	<i>Trever 6/34</i>
Bangor (Wash)(as Arrival/Sub-Base/Bangor)	47.6N	122.7W	<i>Georgia 11/84</i>
Baracoa/Cuba	20.4N	74.5W	<i>Nokomis 5/32</i>
Baranquilla/Colombia	11.1N	74.8W	<i>Seal 5/38\</i>
Barbacoas Bay/Colombia S.A.	10.2N	75.6W	<i>Nokomis 6/37</i>
Barbados (as Hello/--)	13.5N	59.2W	<i>Tuscaloosa 10/34</i>
Barcelona/Spain	41.4N	02.1E	<i>Quincy 9/36</i>
Barents Sea/North of Norway	72.0N	40.0E	<i>Tuscaloosa 7/42</i>
Bar Harbor/Maine	44.4N	68.2W	<i>Indianapolis 8/34</i>
Barter Island/Alaska/Barex 49	70.2N	143.7W	<i>LST 1110 8/49</i>
Basse Terre/St. Kitts	17.3N	62.7W	<i>Honolulu 3/39</i>
Batabaal, Cuba (Surgidero de Batabano)	22.7N	82.3W	<i>Hannibal 3/26</i>
Batabano/Cuba	Same as above		<i>Hannibal 4/27</i>
Batangas/PI	13.7N	121.0E	<i>Houston 12/40</i>
Batavia/Java N.E.I. (Jakarta)	06.2S	106.8E	<i>Canopus 5/35</i>
Bath/Maine	43.9N	69.8W	<i>Marblehead 7/34</i>
Baton/Rouge La.	30.5N	91.2W	<i>Laramie 5/41</i>
Batumi, Georgia (Republic of)	41.7N	41.6E	<i>Whipple 2/21</i>
Bay City (probably San Francisco)	37.8N	122.4W	<i>Mississippi 5/37</i>
First Day/Bay Bridge (SF-Oakland)	37.8N	122.3W	<i>San Francisco 11/36</i>
Worlds/Largest (Bay Bridge)			<i>Bridge 11/36</i>
Trans Bay/Bridge Open (SF-Oakland)			<i>Bridge 11/36</i>
Steel Links/Two Cities			<i>Arctic 11/36</i>
Bay of/Biscay	45.5N	05.0W (west of France)	<i>Dale 9/36</i>
Bayonne/France	43.5N	01.3E	<i>Oklahoma 7/36</i>
Bayonne/N.J.	40.7N	74.1W	<i>Bristol 12/41</i>
Beaumont/Texas	30.1N	94.1W	<i>Long 4/37</i>
Bedloe's/Island N.Y. (Liberty Island)	40.7N	74.1W	<i>Indianapolis 10/36</i>
Beirut/Syria (now Lebanon)	33.9N	35.5E	<i>North Carolina 10/14</i>
Beirut/Syria (Misspelled)			<i>Tennessee 5/19/15</i>
Belem/Para Brazil	01.5S	48.5W	<i>Stingray 9/38</i>
Belfast/Ireland (Northern Ireland)	54.6N	05.9W	<i>Monaghan 10/35</i>
Belfast/Maine	44.4N	69.1W	<i>Trever 7/34</i>
Belgium (as leaving Belgium)	51.1N	04.5E	<i>Erie 11/36</i>
Belize/Br. Honduras	17.5N	88.1W	<i>Trenton 4/35</i>
Bellingham/Washington	48.8N	122.5W	<i>Chicago 7/35</i>
Benshoff I. /Alaska (A fictitious island, the Navy Mail Clerk Charles Olasky apparently made the cancel collector, Mrs. W. A. Benshoff.)			<i>Brooks 7/35</i>
Bering Sea	56.9N	178.0W	
Bikini (Atomic Bomb Test/Bikini.Atoll)	11.6N	165.3E	<i>Saidor 7/46</i>
Atom Bomb/Trial Run			<i>LCS(L) (hull # unknown) 6/46</i>
Atom Bomb/Dropped			<i>LCS(L) (hull # unknown) 6/46</i>

A Bomb/Test/Bikini (4-bar fancy Cancel)			<i>Dawson 6/46</i>
Bikini/Atoll			<i>New York 6/46</i>
Bilbao/Spain	43.3N	03.0W	<i>Kane 9/36</i>
Biniang/D.E.I. (now Indonesia)			<i>Pecos ?</i>
Biorka Isl/Alaska	56.9N	135.5W	<i>Oriole 4/40</i>
Bizerte/Tunisia	37.3N	09.9E	<i>Reid 6/37</i>
Blaine/Washington	49.0N	122.8W	<i>Ellis 7/35</i>
Blaine Wash/U.S. Can/ International Navy Day			<i>Dickerson 7/33</i>
Block I. /RI	41.2N	71.6W	<i>Vestal 6/26</i>
Bluefields/Nicaragua	12.0N	83.8W	<i>Galveston 9/28</i>
Bocca Tigres/South China (Boca)	22.8N	113.6E	<i>Mindanao 5/39</i>
Boeeleng/Bali NEI (Buleleng)	08.1S	115.1E	<i>Canopus 5/38</i>
Bombay/India (Mumbai)	19.0N	72.9E	<i>Sacramento 3/39</i>
Bone/Algeria ('Annaba)	36.9N	07.8E	
Bonin/Islands (Ogasawara Gunto)	27.0N	142E	<i>Ramapo 2/36</i>
Booth Bay/Harbor	43.8N	69.6W	<i>Sturtevant 8/35</i>
Borabora/South Seas (Society Islands)	16.5S	151.8W	<i>Griffin 3/42</i>
Bordeaux/France	44.8N	00.6E	<i>Hatfield 2/37</i>
Bostandjik/Turkey (Istanbul)	41.0N	28.9E	<i>Denebola 9/23</i>
Boston/Mass	42.4N	71.1W	<i>Brooks 4/40</i>
Boston Mass/Navy Day			<i>Antares 10/32</i>
Boston, Mass/Navyyard (one word)			<i>Moffett 3/37</i>
Boston Navy Yard/3 Alm. P.O. Fire	42.4N	71.0W	<i>Arkansas 9/35</i>
Navy Yard/Boston			<i>Wandank 10/35</i>
Charlestown/Nyd Boston	Same		<i>Moffett 7/37</i>
Navy Yard/Boston Mass			<i>MacDonough 6/35</i>
Navy-Yard/Boston Mass			<i>Balch 3/37</i>
Saluting/Op Sail '80/Boston			<i>Barney 6/80</i>
Commission/ed-NY-Boston			<i>Dewey 10/34</i>
Navy Day/Boston, Mass			<i>Dewey 10/34</i>
Maritime Day/Boston, Mass			<i>MacKenzie 6/40</i>
Boston for/Norfolk Va.			<i>Moffett 10/36</i>
Leaving/Boston Mass			<i>Jouett 3/39</i>
Columbus/Day Boston			<i>Quincy 10/36</i>
Bragmans Bluff Nicaragua (Puerto Cabezas)	14.0N	83.4W	<i>(Unknown)</i>
Brazil (as Greetings/Brazil)	09.0S	34.0W	<i>Tuscaloosa ?</i>
Brazos Port/Texas	28.9N	95.3W	<i>Moffett 5/37</i>
Bremen/Germany	53.1N	08.8E	<i>Aylwin 6/35</i>
Bremerton/Washington	47.6N	122.7W	<i>West Virginia 6/33</i>
Bremerton/Wash			<i>Elliott 11/32</i>
Bremerton/to Alaska			<i>Oglala 4/35</i>
Bremerton/Navy Yard			<i>Oklahoma 10/35</i>
Navy Day/Brem Wash			<i>Richmond 10/34</i>
Navy Yard/Bremerton			<i>Worden 2/35</i>
Commissioned/Bremerton, Wash			<i>Worden 1/35</i>
Bremerton/Shakedown			<i>Cushing 1/37</i>
Merry Xmas/Brem Wn			<i>Milwaukee 12/33</i>
Brest/France	48.4N	04.5E	<i>Kane 8/37</i>
Bridgeport/Connecticut	41.2N	73.2W	<i>Wyoming 10/36</i>
Bridgeport/Conn			<i>Schenck 7/39</i>
Bridgetown/Barbados	13.1N	59.6W	<i>Mahan 12/36</i>
Brindisi/Italy	40.6N	18.0E	<i>Tennessee 1914</i>
Bristol/R.I.	41.7N	71.7W	<i>Hamilton 7/35</i>

British/West Indies (Mar. Det St. Lucia/ Windward Islands)	14.0N 61.0W	8/41
Marine Det. /Trinidad	10.7N 61.2W	6/41
Brooklyn/New York	40.7N 74.0W	<i>Sylph</i> 12/40
Brooklyn/NY		<i>Spica</i> 3/40
Brooklyn, NY/Navy Yard		<i>Evans</i> 4/31
Army Base/So. Brklyn N.Y.		<i>Milwaukee</i> ?
52 nd Street/Brooklyn N. Y.		<i>Badger</i> 10/35
Brooklyn/N. Yard NY		<i>Cummings</i> 12/36
Navy Yard/Brooklyn		<i>Navajo</i> 5/40
Navy Yard/Bklyn NY		<i>Dale</i> 7/35
Brooklyn/Navyyard (Navyyard one word)		<i>Brooklyn</i> 4/38
Keel Layed/at Brooklyn (Laid misspelled) (<i>Honolulu</i> keel)		<i>Aylwin</i> 10/35
Brownsville/Texas	26.1N 97.3W	<i>Salmon</i> 5/38
Brunei/Borneo	04.5N 114.7E	
Brunie/Borneo (Misspelled)		<i>Pidgeon</i> 5/38
Brunswick/Georgia	31.2N 81.5W	<i>Overton</i> 10/34
Brussels/Belgium (Bruxelles)	50.8N 04.4E	<i>Aylwin</i> 7/35
Buenaventura/Colombia	03.8N 77.0W	<i>Trenton</i> 6/35
Buenos Aires/Argentina	34.6S 58.3W	<i>O'Brien</i> 6/40
Buenos–Aires/Argentina		<i>Moffett</i> 8/40
Buenos/Aires		<i>Tuscaloosa</i> 11/34
Bulgaria/ (Likely Varna)(See also Varna)	43.2N 27.9E	<i>Galveston</i> 2/20
Burdeos/Tayabas	14.8N 122.0E	<i>Genesee</i> 1/38

Port Locations Letter “C” Combine other interests into Naval Cover Collecting. www.uscs.org



”Cobh Ireland”

Cadiz/Spain	36.5N 06.3E	<i>Wyoming</i> 7/31
Cagliari/Sardinia	39.2N 09.1E	<i>Detroit</i> 12/27
California (as Off/California)		<i>Grebe</i> 12/34
Off Calif/Coast USA		<i>Ranger</i> 2/38
California/Bound		<i>Relief</i> 5/36
California/Earthquake		<i>Pennsylvania</i> 3/33
Farewell/California		<i>Northampton</i> 4/34
Callao/Peru	12.1S 77.1W	<i>Maryland</i> 12/28
Callao/Perue (Misspelled)		<i>Louisville</i> 5/35
Camden/N.J.	39.9N 75.2W	<i>Salt Lake City</i> 7/31
U.S.S, Selfridge/Launched/Camden, N.J.		<i>Herbert</i> 2/36
Campobello/N.B. Canada	44.9N 67/0W	<i>Tuscaloosa</i> 8/39
Canal Zone	09.0N 80.0W	<i>Borie</i> 12/40
Enroute NY/In Canal		<i>Chester</i> 5/32
Pedro Miguel/Canal Zone	09.0N 79.6W	<i>Pennsylvania</i> 8/31
Transit Ped/Miguel Locks		<i>Constitution</i> 4/34
1st Time Thru/Panama Canal		<i>Dewey</i> 4/35
Canal Zone/Aniv.		<i>Childs</i> 8/36
/C.Z.		<i>Pruitt</i> 7/30
Pacific Locks/Panama Canal		<i>Pennsylvania</i> 8/31
Canea/Crete (now Chania)	35.5N 24.0E	<i>Des Moines</i> 12/15
Cannery Bay/Unalaska	53.6N 166.7W	<i>Pollack</i> 4/38
Cannes/France	43.5N 07.0E	<i>Barker</i> 12/27
Canton/China (now Guangzhou)	23.1N 113.1E	<i>Helena</i> 6/30

Canton/South China			<i>Mindanao 7/38</i>
USS Isabel/Canton			<i>Isabel 3/35</i>
Canton/Island (Phoenix Islands) (Kanton)	02.8S	171.7W	<i>Avocet 6/37</i>
Canton/Enderbury Isl	03.1S	171.1W	<i>Argonaut 7/40</i>
Ender-/Bury-Is			<i>Avocet 5/37</i>
Enderbury/Island			<i>Bushnell 8/39</i>
Cao Francis/Cuba (Cayo Frances)	22.6N	79.2W	<i>Nokomis 3/28</i>
Cape/Charles Va.	37.3N	76.0W	<i>Bristol 12/41</i>
Cape Cod/Area Mass	41.8N	70.4W	<i>Monaghan 9/35</i>
Cape Cod Bay (Sailors Artists/Fish Fog)			<i>Herbert 8/34</i>
Cape Cod Canal (as Transit of/--)	41.8N	70.5W	<i>Moffett 9/37</i>
Cape Cruz/Cuba	19.8N	77.7W	
Cap Francis/Cuba	21.9N	84.0W	<i>Nokomis 1928</i>
Cape Gordo/Nicaragua (Punta Gordo)	11.5N	83.7W	<i>Hannibal 2/13</i>
Cape Gracias/Nicaragua	15.0N	83.1W	<i>Coghlan 3/27</i>
Cap Haitien/Haiti	19.7N	72.1W	<i>Woodcock 10/33</i>
Cape Hatteras (as Off Cape/--)	35.2N	75.5W	<i>Constitution 5/34</i>
Cape Horn (as Rounded/Cape Horn)	55.9S	67.3W	<i>Bear 3/41</i>
Cape Kigun/Alaska	52.0N	175.1W	<i>Quail 7/34</i>
Cape May/N.J.	38.9N	74.9W	<i>Owl 8/38</i>
Cape/San Lucas (Mexico)	22.9N	109.9W	<i>Houston 7/38</i>
Capetown/S. Africa (Cape Town)	33.9S	18.4E	<i>Tennessee 11/45</i>
Cape Town/S. Africa			<i>California 11/45</i>
Caracao, PI (U.S. Naval Hospital)(in Dial)	14.5N	120.9E	
Cardenas/Cuba	23.0N	81.2W	<i>Sturtevant 9/33</i>
Cardiff/Wales	51.5N	03.2W	<i>Pittsburgh 1925</i>
Caribana Pt/Colombia	08.6N	76.8W	<i>Bushnell 12/38</i>
Carribean/Sea			<i>Relief 5/34</i>
Cartagena/Colombia	10.4N	75.5W	<i>Bushnell 4/35</i>
Cartagena/Colombia SA			<i>Nokomis 9/37</i>
Cartas En/Columbia (Misspelled)			<i>Houston 7/34</i>
Casablanca/Fr. Morocco	33.6N	07.6W	<i>Claxton 12/37</i>
Cascais/Portugal	38.7N	09.4W	<i>Barry 9/40</i>
Casco /Bay Me.	43.7N	70.0W	<i>Bristol 1/42</i>
Castile Peak/Bay So. China (Hong Kong)	22.4N	114.0E	<i>Mindanao 10/34</i>
Castine/Maine	44.4N	68.8W	<i>Tillman 7/32</i>
Castle Is/Bahamas	22.1N	74.1W	<i>Texas 7/37</i>
Catabalogan/P.I.	11.8N	124.9E	<i>Augusta 3/36</i>
Catabalona/Cuba			
Catalina Is/Cal (Santa Catalina Is)	33.4N	118.5W	
Cavite/Philippines	14.5N	120.9E	<i>Genesee 9/36</i>
Navy Yard/Cavite P.I.			<i>Black Hawk 1/34</i>
Cavite PI/Last Day			<i>Rochester 4/33</i>
Last Day/Incommission/US Navy Yd. Cavite. P.I.			<i>Rochester 4/33</i>
Cayo Mambi/Cuba	20.7N	75.3W	<i>Hannibal 12/30</i>
Cebu/P.I.	10.3N	123.9E	<i>Canopus 11/36</i>
Cebu Cebu/P.I.			<i>Augusta 3/36</i>
Celebes Sea/Passage	05.0N	122.0E	<i>Marblehead 3/38</i>
Cerros /Islands (Cedros Islands) (Mexico)	28.2N	115.2W	<i>Houston 7/38</i>
Changsha/China	28.2N	113.0E	<i>Monocacy 7/28</i>
Chanking/China (Possibly Chungking or part of Hong Kong Harbor)			
Charleston/So. Carolina	32.8N	79.9W	<i>Moffett 4/37</i>
Charleston/S.C.			<i>Kane 1/38</i>

Charleston/S. Car.		<i>Biddle</i> 5/40
Charleston/South Car.		<i>Dallas</i> 12/30
OOF.Oink.I/Charlston (Believe OOF should be OFF. Oink Island does not exist officially; it may have been a local name for a sandbar that uncovered at low tide. The theory is that <i>Dickerson</i> anchored near this small islet on January 15 th , 1935. Also Charleston is misspelled.)		<i>Dickerson</i> 1/35
R.O.T.C./Chas. S.C.		<i>Dickerson</i> 6/35
Charleston/Navy Yard	32.9N 80.0W	<i>Dickerson</i> ?
Charleston/Long Beach (means Charleston to Long Beach, California)		<i>Chester</i> 12/36
Charleston/Mass (in Dial)	42.4N 71.0W	<i>Northampton</i> 3/53
Charleston/Ma		<i>Tattnall</i> 4/32
Charlestown/Nyd Boston		<i>Moffett</i> 7/37
Navy Yard/Chas Mass		<i>Bridgeport</i> 1924
Charlotte/Amalie VI.	18.3N 64.9W	<i>Yorktown</i> 1/36
Chatham/England	51.4N 00.6E	<i>Jouett</i> 4/39
Chatham Is/So. America (Galapagos)	00.7S 89.5W	<i>Trenton</i> 6/35
Chatham/Mass	41.7N 70.0W	<i>Haraden</i> 7/40
Chefoo/China (now Yangtai)	37.5N 121.4E	<i>Smith Thompson</i> 6/35
Chefoo/North China		<i>Augusta</i> 8/35
Chefoo/N. China		<i>John D. Ford</i> 10/37
Chenglin(China)	39.0N 117.9E	<i>Guam</i> 8/36
Chinlinki/China (possibly Zhongzhouziang))	29.2N 113.0E	<i>Oahu</i> 12/30
Chenwanga/China (probably Qinhuangdao)	39.9N 119.7E	<i>Trenton</i> 4/34
Cherbourg/France	49.6N 01.6W	<i>Nashville</i> 8/38
Chernofski/Alaska	53.4N 167.6W	<i>Quail</i> 6/35
Chernofsky/Alaska		(Unknown)
Chesapeake/Bay	38.0N 76.0W	<i>Texas</i> 8/39
Chichagof/Alaska	52.8N 173.1E	<i>Quail</i> 7/35
Chichagof Bay/Attu Island		<i>Quail</i> 6/34
Ch'i Chun (China)	30.1N 115.3E	<i>Tutuila</i> 3/38
Chickenrks/China		<i>Tutuila</i> 3/36
Chile (as Off Coast/Chile)	36.0S 74.0W	<i>Indianapolis</i> 1933
China (as <i>USS Sabine</i> /China)		<i>Sabine</i> 1/46
China/Sea	West of PI	<i>Trenton</i> 2/38
Chin Chorro/Passage Cuba	20.8N 74.9W	<i>Hamilton</i> 9/33
Chinkiang/China	32.2N 119.5E	<i>Luzon</i> 3/39
Chinwangtao/China	39.9N 119.7E	<i>Marblehead</i> 6/27
Chiriqui/Lagoon RP (Bocas del Toro, Panama)	09.3N 82.3W	<i>Nokomis</i> 3/36
Christiana/Norway (Oslo)	59.9N 10.8E	<i>Kansas</i> 6/21
Christmas/Island (Kiritimati)	01.9N 157.3W	<i>Astoria</i> 7/34
Christmas/*Island*		<i>Philadelphia</i> 7/40
Christmas Is (as Passing/Xmas Island)	10.5S 105.7E	<i>Trenton</i> 2/38
Chuginadak/Alaska	52.8N 169.8W	(Unknown)
Chugul/Alaska	51.9N 175.9W	(Unknown)
Chungking/China	29.6N 106.6E	<i>Tutuila</i> 10/34
Chungking/Sze. China		<i>Oahu</i> 7/32
Cienfuegos/Cuba	22.1N 80.5W	<i>Somers</i> ?
Ciudad Truillo R.D. (Santo Domingo)	18.4N 70.0W	<i>Raleigh</i> 3/39
Clipperton/Island	10.2N 109.2W	<i>Houston</i> 7/38
Cobh/Ireland	51.8N 08.3W	<i>Jouett</i> 3/39
Cocos Island/Pacific Ocean	05.5N 87.0W	<i>Moffett</i> 10/36
Cocos Island/Costa Rica		<i>Portland</i> 10/35
Cocos/Island (with President Roosevelt aboard)		<i>Houston</i> 7/34
Coco Solo/Canal Zone	09.4N 79.9W	<i>Thrush</i> 5/38

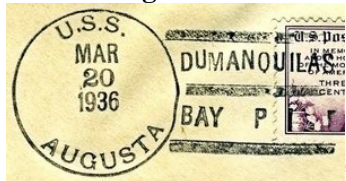
Coco Solo/C Z			<i>Snapper</i> 12/38
Navy Day/Coco Solo CZ			<i>Submarine Division 11</i> 10/40
Cocoa Solo/Canal Zone (Misspelled)			<i>Bass</i> ?
Coiba Isl./Panama	07.5N	81.8W	<i>Hannibal</i> 6/34
Coloma/Cuba (La Coloma)	22.2N	83/6W	<i>Hannibal</i> 5/27
Colombo/Celon (Sri Lanka)(Ceylon Misspelled)	06.9N	79.8E	<i>Sacramento</i> 2/39
Colon/Canal Zone	09.4N	79.9W	<i>Ranger</i> 4/35
Colon/Panama			<i>Raleigh</i> 8/38
Columbia/Glacier	61.0N	149.0W	<i>Nautilus</i> 8/34
Columbia/River	46.2N	123.8W	<i>Portland</i> 10/35
Constantine/Alaska (Amchitka Island)	51.4N	179.3E	<i>Oglala</i> 7/35
Constantinople/Turkey	41.0N	29.0E	<i>Chattanooga</i> 10/20
Constanti/nople Turkey			<i>Eagle #2</i> 12/19
Contreras/Panama (Isl)	07.8N	81.8W	<i>Hannibal</i> ?
Copenhagen/Denmark (Kobenhavn)	55.7N	12.6E	<i>Wyoming</i> 7/38
Coracao/Island (Curacao)	12.1N	68.9W	<i>Gannet</i> 1/35
Cordova/Alaska	60.5N	145.7W	<i>Aylwin</i> 6/36
Corfu/Greece (now Kerkyra)	39.6N	19.9E	<i>Memphis</i> 1927
Corinto/Nicaragua	12.5N	87.1W	<i>Sirius</i> 9/31
Cork/Ireland	51.8N	08.4W	<i>Monaghan</i> 10/35
Corner Brook/NFLD	48.9N	57.9W	<i>Tuscaloosa</i> 8/39
Coronado Roads	32.6N	117.2W	<i>Trenton</i> 11/36
Coronado Roads/Cal. Coast	SW of Coronado (San Diego)		<i>Southard</i> 11/35
Coron Bay/Southern P.I.	12.2N	120.1E	<i>Tulsa</i> 3/39
Corpus Chri/sti Texas	27.8N	97.4W	<i>Benham</i> 5/39
Corpus/Christi Tex			<i>Ellet</i> 5/39
Shakedown/Corp. Christi			<i>Seawolf</i> 5/40
Corsica/France	41.9N	09.0E	<i>Jacob Jones</i> 2/39
Costa Rica (as Survey Area --)	09.4N	84.7W	<i>Hannibal</i> 7/37
Covenas/Colombia	09.4N	75.6W	<i>Bushnell</i> 8.38
Craney Is/Virginia	36.9N	76.4W	<i>Mattole</i> 12/40
Crescent/City Ca.	41.7N	124.2W	<i>Dahlgren</i> 7/35
**/Crete	35.3N	25.6E	<i>Des Moines</i> 10/15
Cristobal/Canal Zone	09.4N	79.9W	<i>Constitution</i> 1934
Cristobal/C.Z.			<i>Dickerson</i> 6/36
Cuarto/Reales Cuba	20.5N	78.0W	<i>Saratoga</i> 5/30
Cuba (as Lingering/On in Cuba)	21.)N	81.0W	<i>Richmond</i> 3/34
At Cuba's/Capitol City			<i>Richmond</i> 6/34
Xmas Day On/Cuba Duty			<i>McFarland</i> 12/33
Cuban Waters			<i>Bainbridge</i> 1/34
Cuba/Survey			<i>Hannibal</i> 1/25
Enroute/to Cuba			<i>New Jersey</i> 1/16
Cuidad/Trujillo D.R. (Dominican Republic)	18.5N	70.0W	<i>Dixie</i> 6/40
Culebra	08.9N	79.5W	<i>Lexington</i> ?
Culebra Island			<i>Relief</i> 5/34
Culebra Is/Canal Zone			<i>Honolulu</i> 2/39
Culebra/Puerto Rico	18.3N	65.2W	<i>Minneapolis</i> 3/34
Culebra/Porto Rico			<i>Fairfax</i> ?
Culebra/Virgin Islands	(Probably Puerto Rico)		<i>McCall</i> 2/39
Culebra/West Indies		“	<i>Pennsylvania</i> ?
Culebra/Island V.I.		“	<i>Richmond</i> 5/39
Curacao/Dutch W.I.	12.1N	68.9W	<i>Salmon</i> 4/38
Curtiss Bay/Md.	39.2N	76.6W	<i>Herbert</i> 10/40

Cutuco/Salvador (now La Union)
 Cuyo East/Pass P.I.

13.3N 87.8W
 11.2N 121.5E

Chaumont 1/36
 Augusta 11/35

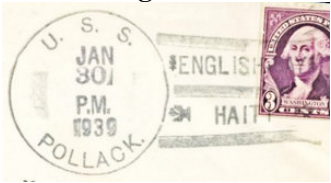
Port Listings Letter "D" Do you know a Naval Cover Collector? Tell them about www.uscs.org.



"Dumanquillas Bay, P.I."

Dahlgren/Virginia	38.3N 77.0W	Portland 5/34
Dama Bay/Panama	07.5N 81.7W	Hannibal 6/34
Danzig/Free State (now Gdansk, Poland)	54.4N 18.7E	Utah 9/21
Darien/China	39.0N 122.0E	Tulsa 10/29
Darien/Panama	09.7N 79.8W	Indianapolis ?
Gulf of/Darien		Nashville ?
Davao Gulf (as Passage/ --)	06.7N 125.7E	Marblehead 4/38
Davao PI/Mindanao	07.1N 125.6E	Augusta 2/36
Davao/Mindanao		Marblehead ?
Davidof Island/Alaska	51.9N 178.5E	Kingfisher 6/35
Davidoe Isl/Alaska (Misspelled)		
Davidson Island/Alaska	(Probably Davidof)	
Deep Cove (Baranof Island, Alaska)	56.5N 134.7W	Swallow 8/34
Delaware/Bay	39.0N 75.0W	Pennsylvania 3/31
Delaware/Breakwater (Cape Henlopen)	38.8N 75.0W	Hannibal 11/32
Delaware Capes (Henlopen & May)		Shaw 2/38
At Anchor/Del Capes		Nashville 7/38
Devonport/England	50.4N 04.2W	Black Hawk 10/19
Dewey Dry Dock P.I. (Olongapo)	14.8N 120.2E	Tulsa 3/37
Dieppe/France	49.9N 01.1E	Shaw 5/37
Dolgoi Bay/Alaska	55.1N 161.8W	Gannet 8/36
Dolgoi Hbr/Dolgoi Is.		Porpoise 4/38
Dover/England	51.1N 01.3E	Aylwin 7/35
Dover/Strait	51.0N 01.5E	Texas 7/38
Drakes/Bay (California)	38.0N 122.9W	Arizona 7/38
Dry/Dock		Monaghan 5/35
Dry Tor/tugas Fla.	24.6N 82.9W	Seal 7/38
Duartis Pt./Panama	07.5N 81.0W	Hannibal 4/34
Dublin/Ireland	53.3N 06.2W	Detroit 1928
Dubrovnik/Yugo slovia (Split & Misspelled)	42.6N 18.1E	McDougal 3/37
Dumanquillas/Bay P.I.	07.6N 123.1E	Canopus 11/36
Dunedin/N.Z.	45.9S 170.5W	Bear 12/40
Dutch Harbor/Alaska	53.9N 166.5W	Patoka 5/33
Dutchharbor/Alaska		Bushnell 8/34
Dutcharbor/Alaska (Misspelled)		Spica 3/41
Dutch Harbor/Amaknak Is.		Quail 5/34
Dutch Harbor/Unalaska		Dewey 5/35
Dutch Hbr./Unalaska		Pollack 3/38
Dutch Harbor/Onalaska (Misspelled)		Vega 10/36
Dutch N G/Invaded (see Jayapura)	02.6S 140.7E	New Jersey 4/44

Port Listing Letter “E” Everyone should visit www.uscs.org to see the universe of Naval Cover Collecting!



“English Bay, Haiti”

East Base (Charcot I.)	69.7S	75.4W	<i>Bear</i> 3/41
Eastport Maine	44.9N	66.9W	<i>Mississippi</i> ?
Edinburgh/Scotland	56.0N	03.1W	<i>Sampson</i> 10/38
Egg Harbor/N.J.	39.3N	74.6W	<i>New York</i> 7/40
Egmont Key/Florida	27.6N	82.7W	<i>Trenton</i> 10/34
Elliott/Bay (Seattle, Washington)	47.6N	122.4W	<i>Maryland</i> 8/35
Empire/Oregon	43.4N	124.3W	<i>Swallow</i> 8/35
Ender/bury Is. (Phoenix Islands)	03.1S	171.1W	<i>Avocet</i> 5/37
Canton/Enderbury Isl			<i>Argonaut</i> 7/40
(see also: Canton Island)			
English Bay/Haiti	18.1N	23.8W	<i>Pollack</i> 2/39
Old English Bay/Haiti			<i>Pensacola</i> 2/39
English/Channel	50N	00.0	<i>Arkansas</i> 6/35
Eniwetok (as <i>USS Cony</i> /US Navy-Eniwetok/Atoll)	11.5N	162.2E	<i>Cony</i> 12/45
Equator (as On Equator off Ecuador)			
Many as-crossing; at; across line; Domain of Neptune Rex; Shellbacks Now; Ahoy Davy Jones; Neptune’s Royal Party; Lat.00.00/Long 81.00 etc.			
Recrossed/Equator			<i>Tuscaloosa</i> 12/34
Equator/1921			<i>Idaho</i> 1/21
Escondido/Colombia	09.0N	76.2W	<i>Bushnell</i> 8/38
Eureka/California	40.8N	124.2W	<i>Long</i> 7/36
Europe			
Departed for Europe			<i>MacDonough</i> 8/35
U.S.Naval Forces in European Waters			Usually WWI
Europe/Bound			<i>Aylwin</i> 5/35
European Fleet			<i>Borie</i> 1927
European/Waters			<i>Stewart</i> 7/22
Evacuation/East Base	(Palmer Land, Antarctica)		<i>Bear</i> 3/41
Everglades/Florida (probably Port Everglades)	26.1N	80.1W	<i>J. Fred Talbot</i> 4/34
Everett/Washington	48.0N	122.2W	<i>Milwaukee</i> 7/36
Port Listings Letter “F” Fun is finding a naval cover that fits in your collection. Info at: www.uscs.org .			
Fajardo/P.R.	18.3N	65.6W	<i>Mayrant</i> 3/41
Fall River/Mass.	41.7N	71.1W	<i>Schenk</i> 8/35
Falmouth/England	50.1N	05.0W	<i>North Carolina</i> ?
Fanning Island (Line Islands)	03.9N	159.3W	
F Bay Attu/Is Alaska	52.9N	172.9E	
500 Miles/At Sea			<i>Lexington</i> 5/34
Flamenco/Island R.P.	08.9N	79.5W	<i>Fairfax</i> 10/26
Fonseca Bay/Nicaagua (Misspelled)	13.3N	87.8W	<i>Aircraft Base Force, U.S.Fleet</i> 5/36
(See also Gulf Fonseca/Nicaragua)			
Foochow/China (now Fozhou)	26.1N	119.2E	<i>John D. Edwards</i> 8/35
Foreign Service (often occur in censor marks of WWI)			<i>New York</i> 1/18
Fore River/Mass (as <i>USS Lau</i> ---)	42.2N	70.9W	<i>Herbert</i> 3/36
Fort de/France Martinique	14.6N	61.0W	<i>Enterprise</i> 3/39
Fort Pond/Bay L.I.	41.1N	71.9W	<i>Aylwin</i> 5/35
Fort Lauder/dale Florida	26.1N	80.1W	<i>Antares</i> 3/34
Fortress/Monroe Va.	37.0N	76.3W	<i>Northampton</i> 9/34

Fort Myers/Fla.	26.6N 81.9W	<i>Roper 3/37</i>
Fort Worden/Wash	48.1N 122.8W	<i>Stingray 7/39</i>
Fredricksted/St. Croix	17.7N 64.8W	<i>Whitney 3/39</i>
Fredricksted/Virgin Islands		<i>Texas 9/34</i>
Freeport/Texas	29.0N 95.4W	<i>Fox 9/34</i>
Fremantle/W. Australia	32.1S 115.7E	<i>Augusta 11/34</i>
French Frigate/Shoal TH	23.7N 166.2W	<i>Wright 11/35</i>
French Frigate/Atoll		<i>Porter 3/38</i>
French Fri/gate Shoal		<i>Medusa 5/37</i>
French Frigate Shoals/Plane Guard		<i>Gamble 4/33</i>
French Indo China	10 to 20N 95 to 110E	<i>Pillsbury 10/35</i>
Frontera/Mexico	18.5N 92.6W	<i>Cleveland 1924</i>
Fuerte Is/Columbia (Misspelled Colombia)	09.4N 76.2W	<i>Bushnell 10/38</i>
Funchal/Madeira Isl	32.6N 16.9W	<i>Reid 1/37</i>
Funchal/Madeira		<i>Wyoming 7/37</i>
Fusan/Korea (Busan-Pusan-Husan)	35.2N 129.1E	

Port Locations Letter "G" Great covers can be found from the many fine USCS dealer/members. List at www.uscs.org



"Wreck Bay, Galapagos"

Galapagos/Islands	00.0 92.0W	<i>Houston 7/38</i>
Galapagos/Ecuador		<i>Lapwing 10/40</i>
Galapagos/Isles Pacific		<i>Moffett 10/36</i>
P.O. Bay/Galapagos Is. (Post Office)	01.3S 90.5W	<i>Bagley 9/39</i>
Tagus Cove/Galapagos		<i>Erie 12/38</i>
Wreck Bay/Galapagos		<i>Bagley 9/37</i>
Galveston/Texas	29.1N 94.5W	<i>Shubrick 5/40</i>
Gandia/Spain	39.0N 00.1W	<i>Claxton 6/38</i>
Gardiners Bay L.I.	41.1N 72.1W	<i>Babbitt 7/36</i>
Gate of the Far East (Singapore)	01.2N 104.0E	<i>Augusta ?</i>
Gatun/Canal Zone	09.3N 79.9W	<i>Pennsylvania 8/31</i>
Gatun Lake/Canal Zone		<i>Relief 8/34</i>
Gatun/Locks CZ		<i>Pennsylvania 4/34</i>
Genoa/Italy (Genova)	44.4N 08.9E	<i>Drayton 11/36</i>
Genoa/Italy		<i>Jacob Jones 1/38</i>
Georgetown British Guiana (Guyana)	06.8N 58.2W	<i>Cuttlefish 8/34</i>
Georgetown Gr(and) Cayman	19.3N 89.4W	<i>Hannibal 1/14</i>
Georgetown/S.C.	33.4N 79.2W	<i>Blakeley 7/36</i>
Gibraltar	36.1N 05.4W	<i>Flusser 12/36</i>
Gibraltar/HM Dockyard		<i>Raleigh 12/36</i>
H.M. Dk Yd/Gibraltar		<i>Raleigh 9/37</i>
Rock of Gibraltar		<i>Raleigh 10/37</i>
Straits of Gibraltar		<i>Dale 9/38</i>
Gibraltar/Spain		<i>Detroit 10/27</i>
Gibraltar/B P		<i>Claxton 11/37</i>
Gijon Spain (as Aids Refugees/ -)	43.5N 05.7W	<i>Kane 8/37</i>
Glasgow/Scotland	55.9N 04.7W	<i>Monaghan 10/35</i>
Gloucester/Mass	42.6N 70.7W	<i>Wichita 6/39</i>
Golden/Gate	37.8N 122.5W	<i>Mississippi 11/36</i>
Golden Gate/Bridge		<i>Pennsylvania 2/33</i>

Golden Gate/Bridge Opening			<i>Cachalot 5/37</i>
Macon Over/Golden Gate (USS MACON ZRS-5)			<i>Pennsylvania 12/34</i>
Bridge/Dedication (Golden Gate)			<i>Pennsylvania 5/37</i>
Navy Day Bay/Bridge Event			<i>Chester 10/36</i>
SF-Oakland/Bay Bridge			<i>Smith ?</i>
Trans Bay/Bridge Open			<i>Bridge 11/36</i>
Gonaives/Haiti	19.4N	72.7W	<i>Reid 4/29</i>
Gonaives/Hispanola (Hispaniola)			<i>Wright 1934</i>
Gonaives/Bay Haiti			<i>Stingray 3/39</i>
Gonaives/Area			<i>Yorktown 1/39</i>
Gonave Gulf Haiti (Misspelled)			<i>Dewey 1/35</i>
Gonzales (as Isla/Gonzales RP) (probably Isla Pedro Gonzales, Panama))			
	08.4N	79.1W	<i>Taylor 3/38</i>
Gorgona Is So. America (Colombia)	03.0N	78.2W	<i>Trenton 6/35</i>
Goteborg/Sweden	57.7N	12.0E	<i>Oklahoma 7/36</i>
At Goteborg/Sweden			<i>Nashville 9/38</i>
Governors Island NY (Com Day/St/Go)	40.7N	74.0W	<i>CGC Sturgeon Bay 8/88</i>
Grand Banks Fishing Grds (Newfoundland)	46.0N	56.0W	<i>Arkansas 9/35</i>
Gravesend Bay N. Y.	40.6N	74.0W	<i>Nashville 7/38</i>
Gravesend England	51.4N	00.4E	<i>Minneapolis 8/34</i>
Gray's/Harbor Wn. (Washington)	46.9N	124.0W	<i>Constitution 5/33</i>
Great Sit/kin Alaska	52.0N	175.9W	<i>Oglala 6/34</i>
Great Sitkin/Aleutian Is			<i>Tanager 8/34</i>
Great Sitkin/Alaska			<i>Swallow 7/34</i>
Green/Cove Sprs (Florida)	30.0N	81.7W	<i>Inch 12/45</i>
Greenock Scotland	55.9N	04.7W	<i>Wyoming 7/31</i>
Greenport/L.I. N. Y.	41.1N	72.4W	<i>Brooks 7/40</i>
Groton/Connecticut	41.4N	72.1W	<i>Perch 12/36</i>
Guam M. I.	13.5N	144.6E	<i>Rochester 4/32</i>
Guam/Micronesia Islands			<i>Gold Star 7/34</i>
Gaum/MI (Misspelling)			<i>Gold Star 2/35</i>
Guam./M.I.			<i>Chaumont 8/39</i>
Guam/Labor Day			<i>Gold Star 9/34</i>
Guam MI/Labor Day			<i>Gold Star 9/37</i>
Guam/M.I. (in manuscript)			<i>Gold Star 10/33</i>
Guam/MI (no middle bar)			<i>Gold Star 7/34</i>
Guam MI/Merry Xmas			<i>Gold Star 12/35</i>
Guam/Micronesia Islands			<i>Gold Star 7/34</i>
Guam Fair/Guam MI			<i>Gold Star 5/36</i>
Merry Xmas/Guam M I			<i>Gold Star 12/34</i>
Navy Day/Guam, M.I.			<i>Gold Star 10/34</i>
Enrout/Guam (Misspelled)			<i>Henderson 1939</i>
Enroute/Guam M.I.			<i>Perch 11/39</i>
En Route/Guam M.I.			<i>Pittsburgh 1/28</i>
Guam/			<i>Henderson 2/34</i>
Guam/M.I. (comma after I)			<i>Henderson 9/34</i>
(Above also seen with period after I on same date)			
Guam/M,I. (comma after M)			<i>Henderson 3/34</i>
Guam/M.I. (fancy cancel)			<i>Henderson 12/38</i>
Guam/Raided			<i>New Jersey 2/44</i>
Guam/Captured			<i>New Jersey 8/44</i>
Guam (no killer bars)			<i>Penguin 5/38</i>
Guam/M.I. (no killer bars)			<i>Penguin 10/35</i>

Guam/MI (no killer bars)			<i>Penguin</i> 1/38
Guam/Guam			<i>Penguin</i> 3/41
Guam M.I./Navy Day			<i>Penguin</i> 10/36
“Penguin” Guam/Guam			<i>Penguin</i> 3/41
Station Ship/Guam Guam			<i>Penguin</i> 11/40
Station Ship/Guam			<i>Pinola</i> 12/40
Guam Island			<i>Trinity</i> 1/41
Guam/Island			<i>Trinity</i> 1/41
Guanayabo/Cuba (probably Guacanyabo)	20.5N	77.5W	<i>Grebe</i> ?
Guantanamo Cuba	19.9N	75.1W	<i>Brooks</i> 1/26
Guantanamo/Bay			<i>Sampson</i> 3/39
Guantanamo Bay Cuba			<i>Edwards</i> 4/40
Guantanamo/Bay Cuba			<i>Spearfish</i> 9/39
Guantanamo/Bay-Cuba			<i>Dewey</i> 11/34
Guantanamo/Bay, Cuba			<i>DuPont</i> 10/33
Gantanamo/Bay Cuba (Misspelled)			<i>Portland</i> ?
Gauntanamo/Bay Cuba (Misspelled)			<i>Dixie</i> 7/40
G’tanamo Bay/Navy Day			<i>Fairfax</i> 10/33
Enroute/GTMO Cuba			<i>Omaha</i> 7/34
GTMO/Cuba			<i>Charles Ausburn</i> 1/27
GTMO Bay/Cuba			<i>Fairfax</i> 10/35
GTMO Cuba/Happy Newyear (one word)			<i>Ellis</i> 1/34
Quantanamo/Bay Cuba (Misspelled)			<i>Trippe</i> ?
Depart/Guantanamo			<i>Lexington</i> 5/34
SPERON GTMO/Bay Cuba (Special Service Squadron)			<i>Sturtevant</i> 8/33
First Day/GTMO Bay Cuba			<i>Northampton</i> 5/34
Guayaquil Ecuador	02.2S	79.9W	<i>Maryland</i> 11/28
Guayaquil/*Ecuador*			<i>Trenton</i> 6/35
Guaymas Mexico	27.9N	110.9W	<i>Worden</i> 4/35
Guaymas/Mexico			<i>Chattanooga</i> 4/16
Guinan Samar/Is Philippines (Guinian)	11.0N	125.7E	<i>Warren</i> ?
Gulf of/Darien RP	09.7N	79.8W	<i>Nashville</i> ?
Gulf Fonseca/Nicaragua (See also Fonseca Bay)	13.3N	87.8W	<i>Lapwing</i> 7/36
Gulf of Guacanayabo	20.5N	77.5W	<i>Prairie</i> 2/19
Gulf of/Guayaquil	02.7S	80.7W	<i>Bushnell</i> 7/40
Gulf Nicoya/Costa Rica	09.7N	84.8W	<i>Hannibal</i> 4/35
Gulf of Mexico (as At Sea Gulf -)	25.0N	91.0W (Approximately)	<i>Moffett</i> 5/37
Aransas Gulf/of Mexico (Pass)	27.8N	96.9W	<i>Moffett</i> 5/37
Gulf of Paria Venezuela	10.8N	62.3W	<i>Hannibal</i> 1/32
Gulf of/Siam	09.7N	101.3E (Approximately)	<i>Trenton</i> 2/38
Gulf of Tehauantepec	16.0N	95.0W	<i>Constitution</i> 3/34
Gulf of Venezuela	11.5N	71.0W	<i>Bushnell</i> 6/40
Gulfport Mississippi	30.4N	89.0W	<i>Constitution</i> 3/32
Gwanlee/China		South of Chinlinki	<i>Monocacy</i> 2/35

Port Listing Letter “H” How about starting a new topic of Naval Cover Collecting today? www.uscs.org



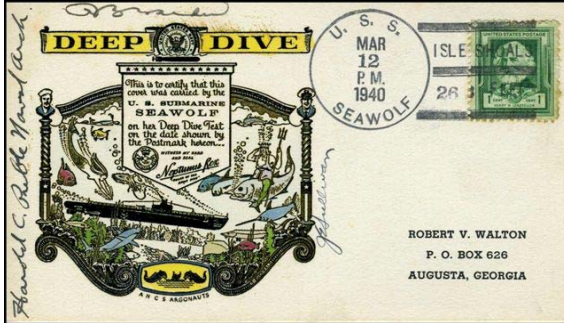
“Hasi, China”

Haifa/Palestine (Israel)	32.8N	35.0E	<i>Memphis</i> 2/27
Haines/Alaska	59.2N	135.4W	<i>Case</i> 6/39

Haiphong/Indo China (Vietnam)	20.9N	106.7E	<i>Peary</i> 10/27
Haifong Fr./Indo China (Misspelled)			<i>John D. Edwards</i> 10/35
Halifax Nova Scotia	44.6N	63.6W	<i>New York</i> 6/39
Halifax/Nova Scotia			<i>Tuscaloosa</i> 8/39
Halifax/N.S.			<i>Texas</i> 6/39
Halifax/Nova-Scotia			<i>New York</i> 9/37
Hamamatsu/Japan	34.6N	137.7E	<i>San Juan</i> 9/45
Hamburg/Germany	53.5N	09.9E	<i>Hull</i> 6/35
Hamilton/Bermuda	32.3N	64.8W	<i>Philadelphia</i> 2/38
Hampton/Roads VA	37.0N	76.3W	<i>Wyoming</i> 5/36
Hamp.Roads/Norfolk			<i>Nashville</i> 7/38
Hampton/Rds, Va.			<i>Trenton</i> 9/29
Passage to/Hampton Road			<i>Arkansas</i> 8/35
Hanapepe/Kauai TH	21.9N	159.6W	<i>Schley</i> 8/41
Hangchow (Hangzhou)	30.3N	120.2E	
Hankow/China (Hangzhou Hubei)	30.6N	114.3E	<i>Oahu</i> 11/33
364 Miles Above/Hankow China			<i>Guam</i> 10/33
Hnkow (Misspelled)			<i>Tutuila</i> 7/31
Hankow/Hupeh.China			<i>Oahu</i> 10/34
Hankow/Hup.China			<i>Oahu</i> 10/33
Nkow/China (likely Hankow)			<i>Guam</i> 5/35
Hanku/China (Hangu Hubei)	39.2N	117.8E	<i>Asheville</i> ?
Harwich/England	51.9N	01.3E	<i>Shaw</i> 4/37
Hasi/China	30.0N	112.3E	<i>Tutuila</i> 11/35
Hastings/England	50.8N	00.6E	<i>Detroit</i> 6/27
Havana/Cuba (Habana)	23.1N	82.3W	<i>Sturtevant</i> 10/33
Habana de Cuba			<i>Bagley</i> 9/37
At Cuba's/Capitol City			<i>Richmond</i> 6/34
Flag Day/Havana C.			<i>Perry</i> 6/34
Flagship/Havana, Cuba			<i>Richmond</i> 9/33
COMSPERON/Habana*Cuba			<i>Omaha</i> 7/34
Special Serv/Havana Cuba			<i>Richmond</i> 3/34
Hawaii/T.H.	19.8N	155.0W	<i>Vincennes</i> 4/38
Hawaii			<i>Colorado</i> 4/40
Aloha/Hawaii			<i>Houston</i> 5/35
Hawaiian Islands			<i>Cincinnati</i> 8/40
Hawaii/-Jubilee/...1936			<i>Argonaut</i> 6/36
Hawaiian/Area			<i>Ellet</i> 3/41
Hawaiian/Cruise			<i>New Mexico</i> ?
Kahameha Day...Hawaii			<i>Argonaut</i> 6/35
Hawaii Jubilee King/Kamehameha Day			<i>Whippoorwill</i> 6/36
Return Hawaii/War Game Over			<i>Pennsylvania</i> 5/35
Flagship/Squadron 4/Hawaii			<i>Argonaut</i> 8/36
Helsingfors/Finland (Helsinki)	60.1N	25.0E	<i>Vincennes</i> 5/37
Helsinki/Finland			<i>Winslow</i> 5/37
Hermes Reef (as Pearl and/Hermes Reef)	27.9N	175.3W	<i>Avocet</i> 4/36
Hermosa Bay/Panama	08.2N	82.6W	<i>Hannibal</i> 6/34
Hermosa/Beach Calif	33.9N	118.4W	<i>Astoria</i> 7/35
Hilo/ T. H.	19.7N	155.0W	<i>New Orleans</i> 7/34
Hilo/Hawaii			<i>Chester</i> 1/38
Hilo/Hawaii/Ter. Hawaii			<i>Argonaut</i> 1/37
Hilo/Terr.Hawaii			
Hilo/Hawaii, T.H.			<i>Breese</i> 11/33

Hinchinbrook/Alaska	60.4N	146.5W	<i>Swallow</i> 9/35
Hiro/Japan (Obihiro)	49.2N	143.2E	<i>Montpelier</i> 11/45
Hiro Wan (as USS Stewart/Hiro Wan)			<i>Stewart</i> 11/45
Hnkow (see Hankow)			
Hobart/Australia	42.9S	147.3E	<i>Louisville</i> 2/38
Hoboken/New Jersey	40.7N	74.0W	<i>Dorsey</i> 6/34
Hohsien/China (Hexian)	31.7N	118.4E	<i>Oahu</i> 1/38
Hoisho to/Island (likely Kasho to, Taiwan)	23.4N	119.3E	<i>Alden</i> 12/37
Hollywood/Fla	26.0N	80.0W	<i>Chandler</i> 9/34
Holtz Bay Alaska	52.9N	172.3E	<i>Quail</i> 6/34
Home (homeport Norfolk)	36.9N	76.3W	<i>Manley</i> 11/38
Homeward/Bound (from Gibraltar to Norfolk)			<i>Manley</i> 10/38
Honan/Ichang China (Louyan)	34.5N	112.4E	<i>Oahu</i> 8/36
Hong Kong/China	22.3N	114.2E	<i>Pittsburgh</i> 3/29
Hong Kong/BCC (British Crown Colony)			<i>Alden</i> 4/40
Honskong/B.C.C. (Misspelled)			<i>Canopus</i> 10/36
Hong Kong/South China			<i>Mindanao</i> 3/39
Navy Day/Hong Kong - BCC			<i>Chester</i> 10/35
Buoy 5/Hong Kong			<i>Black Hawk</i> ?
Victoria/Hong Kong			<i>Pillsbury</i> 9/35
Honolulu/Hawaii	21.3N	157.8W	<i>Waters</i> 11/38
Honolulu/Terr. Hawaii			<i>Perkins</i> 1/37
Honolulu/T.H.			<i>Henderson</i> 9/36
U.S. Sub. Base/Honolulu (actually Pearl Harbor)			<i>Argonaut</i> ?
Independence /**Day**/Honolulu			<i>Argonaut</i> 7/35
Honolulu T.H./China Bound			<i>Rochester</i> 3/32
Enroute/Honolulu			<i>Oklahoma</i> 5/35
Mothers Day/Honolulu TH			<i>Richmond</i> 5/35
Problem XIX/Honolulu TH			<i>Worden</i> 4/38
USN.Airmail/to Honolulu			<i>San Francisco</i> 1934
Aloha/Honolulu			<i>Chaumont</i> 5/34
Hoonah/Alaska	58.1N	135.4W	
Hoquiam/Washington	47.0N	123.9W	
Horta/Azores	38.5N	28.6W	<i>Sacramento</i> 5/39
Horta Fayal			<i>Sacramento</i> 5/39
Houston/Texas	29.7N	95.0W	<i>Platte</i> 5/40
Howdy/Houston			<i>Tarpon</i> 5/36
Howland Is/South Seas (Phoenix Islands)	00.5N	176.4W	<i>Pelican</i> 10/36
Enroute/Howland Is			<i>Colorado</i> 7/37
Howland Is/Area		(Earhart Search)	<i>Colorado</i> 7/37
Earhart/Search Test			<i>Cushing</i> 7/37
Howland/Island			<i>Astoria</i> 9/34
Howland Is/South Seas			<i>Pelican</i> 10/36
Howlik/China (Kwangtung, Hou-li)	23.1N	113.3E	<i>Mindanao</i> 7/33
Hsiakwan/China	32.0N	118.5E	<i>Panay</i> 8/35
Hsin Ho/China	39.0N	117.6E	<i>Asheville</i> 4/32
Hudson/River N. Y.	40.7N	74.0W	<i>Northampton</i> 6/34
Hull Island/Phoenix Gr.	02.6N	172.3W	<i>Bushnell</i> 8/39
Hunters Point (San Francisco)	37.7N	122.4W	<i>Honolulu</i> 11/39
Hwangshikong/China	30.2N	115.1E	<i>Luzon</i> 6/36
Pa-Ho/China (means river bank...ship's log show at Hwangshikong)			<i>Tutuila</i> 3/36
Hyerres/France	41.3N	06.1E	<i>Utah</i> 4/22

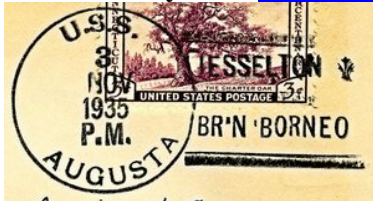
Port Listing Letter "I" In searching for information on Naval Cover Collecting, always start at www.uscs.org.



"Isle Shoals – 263 Feet"

Iceland (as US Marines/Iceland)	64.7N 18.7W	<i>1st Marine Brigade 2/42</i>
Ichang/China (Tung Hu)	30.7N 111.5E	<i>Tutuila 1/30</i>
Ichang/Hupeh China		<i>Oahu 4/32</i>
Yangtze Patrol/Ichang China		<i>Monocacy 10/37</i>
Igitkin/Alaska	52.0N 175.9W	<i>Oglala 9/34</i>
Iliuliuk/Alaska	53.9N 166.5W	<i>Worden 4/37</i>
Iliuliuk/Unalaska		<i>McDonough 4/37</i>
Iliuliuk Bay/Alaska		<i>Kingfisher 9/34</i>
Iloilo/PI	10.7N 122.5E	<i>Augusta 11/35</i>
Iloilo to/Manila P.I.	(Unspecified)	<i>Augusta 12/34</i>
Indian/Ocean		<i>Trenton 2/38</i>
Inland Sea/Japan	34.5N 134.6E	<i>Augusta 5/35</i>
Internatn'l/Date Line	180 th Meridian	<i>Ramapo 4/38</i>
180 th Meridian		<i>Henderson 1/36</i>
Iona Island/New York	41.3W 74.0W	<i>Perch 1/37</i>
Iona Island/N Y		<i>Nitro 9/39</i>
Isla Pedro/Gonzales, RP	08.4N 79.1W	<i>Taylor 3/38</i>
Isle of/Shoals	43.0N 70.6W	<i>Semmes 5/39</i>
Isle Shoals/263 Feet		<i>Seawolf 3/40</i>
I-Tu (China)	30.4N 111.5E	<i>Monocacy 4/35</i>

Port Listing Letter "J" Just imagine how many new members USCS would have if every member recruited one new one this year? www.uscs.org

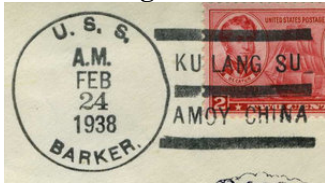


"Jesselton, Br'n Borneo"

Jacksonville/Florida	30.3N 81.6W	<i>Tillman 5/35</i>
Jacksonville/Fla. Navy Day		<i>Manley 10/34</i>
Jaco Bay Costa Rica	09.6N 84.6W	<i>Hannibal 3/35</i>
Jaffa/Palestine (now Tel Aviv, Israel)	32.0N 34.8E	<i>Des Moines 1915</i>
Jambeli/Ecuador	03.2S 80.0W	<i>Sumner 11/40</i>
James Bay Galapagos (Santiago Island)	00.3S 90.9W	<i>Erie 12/38</i>
Japan	(Unspecified)	<i>Delta 1/46</i>
Good Will/Tour Japan		<i>Augusta 5/35</i>
US/Navy/Japan		<i>Dauphin 10/45</i>
Java/Sea	(Unspecified)	<i>Asiatic Fleet 12/38</i>
Java/Sea	"	<i>Trenton 2/38</i>
Jeromie/Haiti	18.6N 74.2W	<i>Woodcock 9/33</i>
Jesselton/Br'n Borneo (Kota Kimbalu)	06.0N 116.1E	<i>Augusta 11/35</i>

Jicarita/Panama	07.2N	81.8W	<i>Hannibal</i> 8/35
Jicaron/Panama	07.3N	81.8W	<i>Hannibal</i> 7/35
Jinsen/Korea (Chemulpo)	37.5N	126.6E	<i>Cimmaron</i> 1/46
Johnston/Island (Hawaiian Islands)	16.7N	169.5W	<i>Whippoorwill</i> 11/39
(also misspelled Johnson and Johntson Island)			
Johnston/Islands TH			<i>Pelican</i> 11/35
Johnston/Islands			<i>Pelican</i> 11/36
Johnson/Isl', T.H. (Misspelled)			<i>Wright</i> 9/38
Johnson Is./T-H- (Misspelled)			<i>Wright</i> 9/39
Jolo Island P.I.	05.9N	121.0E	<i>Pecos</i> 3/36
Jolo/Philippines			<i>John D. Ford</i> 12/39
Journey's End			<i>Monaghan</i> ?
Juan les Pins/France	43.6N	07.1E	<i>Raleigh</i> 4/37
Juneau/Alaska	58.3N	134.4W	<i>Dolphin</i> 7/34

Port Listings Letter "K" Know someone who collects Naval Covers? Tell them about www.uscs.org.



"Ku Lang Su, Amoy China"

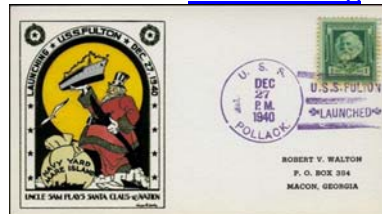
Kachemak/Alaska	59.6N	151.4W	<i>Roper</i> 1/36
Kachemak Bay/Alaska			<i>Ranger</i> 1/35
Kacilsak/Alaska	63.5N	154.5W	
Kagalaska Strait	51.8N	176.4W	<i>Kingfisher</i> 8/37
Kago Shima (Japan)	31.6N	130.6E	<i>Cybele</i> ?
Kahului/Maui	20.9N	156.5W	<i>Perkins</i> 2/37
Kalului/Hawaii (probably Misspelled Kahului)			<i>Cushing</i> 2/37
Kaikuiang/China (now Jujiang)	29.7N	116.0E	<i>Luzon</i> 7/35
Kailua/Hawaii	21.4N	157.7W	<i>Whippoorwill</i> 2/38
Kaktovik/Alaska	70.8N	143.7W	<i>Staten Island</i> 8/55
Kalama/Washington	46.0N	122.8W	<i>Constitution</i> 8/33
Kalohi/Channel (Hawaiian Islands)	21.0N	157.0W	<i>Porpoise</i> ?
Kamranh Bay/F.C. (Cam Ranh Bay, Vietnam)	11.9N	109.1E	<i>Augusta</i> 4/39
Kanaga Bay/Als	51.7N	177.2W	<i>Swallow</i> 4/34
Kanaga Bay/T.A. (Territory of Alaska)			<i>Tanager</i> 10/37
Kanaga Isl/Alaska			<i>Kingfisher</i> 5/35
Kanaga/Alaska			
Kanga Is/Aleutians	56.9N	135.4W	<i>Portland</i> 10.37
Kansas Bay			
Kasatochi Alaska	52.1N	175.5W	<i>Swallow</i> 6/34
Kasatochi/Aleutians			<i>Swallow</i> 6/34
Kauai/T.H.	22.2N	159.7W	<i>Trenton</i> 5/37
North/Coast Kauai			<i>Ranger</i> 3/38
Kaw Kut/Gulf of Siam (Ko Kut)	11.7N	102.5E	<i>Augusta</i> 10/35
Kealakekua/Bay TH (Island of Hawaii)	19.5N	155.9W	<i>Ramsey</i> 7/33
Kelso/Wash	46.1N	122.9W	<i>MacDonough</i> 7/38
Ketchikan/Alaska	55.3N	131.6W	<i>Swan</i> 7/34
Ketchican/Alaska (Misspelled)			<i>Holland</i> 7/34
Keyport/Washington	47.7N	122.6W	<i>Sturgeon</i> 2/39
Key West/Florida	24.6N	81.8W	<i>Aaron Ward</i> 5/40
Key West.Fla			<i>PC-451</i> 3/41
Key West/Fla			<i>Evans</i> 12/39
Khvastof Is./Alaska (Khvostof)	52.0N	178.3E	<i>Kingfisher</i> 5/35

Khwestof /Isl			<i>Tanager</i> 6/35
Kiating (China)	29.6N	103.8E	
Kiao			
chow Bay/North China (Kiachou)	36.0N	120.0E	<i>Augusta</i> 8/35
Kiel Germany	54.3N	10.1E	<i>Arkansas</i> 6/37
Kingmans/Reef (correct is Kingman)	06.4N	162.3W	<i>Astoria</i> 7/34
Kingston/Jamaica	18.0N	76.8W	<i>Omaha</i> 6/37
Kingston/St Vincent (Kingstown)	13.1N	61.2W	<i>Lapwing</i> 2/35
Kirkwall/Orkney Isle	59.0N	03.0W	<i>Heron</i> 8/19
Kiska/Alaska	52.0N	177.5E	<i>Tanager</i> 6/35
Kiska Bay/Alaska			<i>Quail</i> 5/35
Kiska H'br/Alaska			<i>Oglala</i> 5/35
Kiska Island/Alaska			<i>Kingfisher</i> 6/35
Kiukiang/China	29.7N	116.0E	<i>Panay</i> 10/31
Klewnuggit/Inlet Alaska	63.6N	154.5W	<i>Swallow</i> 7/35
Kobe/Japan	34.7N	135.2E	<i>Bulmer</i> ?
Kobe/Nippon			<i>John D. Ford</i> 5/35
Pier Five/Kobe Japan			<i>Black Hawk</i> 4/34
Buoy No. 21/Kobe Japan			<i>Black Hawk</i> 5/35
Buoy No 18/Kobe Japan			<i>Augusta</i> 5/35
U.S. Asiatic Fleet/Kobe, Japan			<i>Edsall</i> 5/35
Kodiak/Alaska	57.8N	152.4W	<i>Chester</i> 6/39
Kodlak/Alaska (numeral 1 vice I in name)			<i>Chaumont</i> 7/40
Kola Inlet/ U.S.S.R.	69.2N	33.5E	<i>Tuscaloosa</i> 5/46
Kona Coast/Hawaii	20.0N	155.0W	<i>Oglala</i> 8/38
Kong Moon/China (Sunwei)(Xinhui)	22.6N	113.0E	<i>Mindanao</i> 4/35
Koniuji/Aleutian Is.	52.2N	175.2W	<i>Swallow</i> 7/34
Korea (in dial)	(Unspecified)		<i>Sierra</i> 11/45
Kowan/China (Kouan)	32.3N	119.9E	<i>Oahu</i> 3/38
Kowloon/Hong Kong	22.3N	114.2E	<i>Gold Star</i> 11/37
Ku Lang Su/Amoy China	24.5N	118.1E	<i>Barker</i> 2/38
Kuluk Bay/Alaska	51.9N	176.6W	<i>Bernadou</i> 5/35
Kuluk Bay/Aleutians			<i>Kingfisher</i> 6/34
Kuluk Bay/Unalaska			<i>Ramapo</i> 6/34
Kuluk Bay/Adak Island			<i>Raleigh</i> 5/35
Kure Island./Flagship	28.4N	178.3W	<i>Oglala</i> 4/36
Kwajalein/Invaded (<i>New Jersey</i> in Task Force)	08.7N	167.7E	<i>New Jersey</i> 2/44
Kwanghsikang/China	(Unable to identify)		<i>Tutuila</i> 8/35
Kwangtung/South China (Guangdong)	23.1N	113.3E	<i>Mindanao</i> 3/38
Kwangtung/Province			<i>Mindanao</i> ?
Kweifu China (Kweichowfu)	30.0N	109.5E	<i>Guam</i> 5/37
Kweifu/Sze China			<i>Oahu</i> 8/34
Kyushu/Japan	33.0N	131.0E	<i>Bradford</i> 9/45

Port Listings Letter "L" Lovely cachets are common on Naval Covers. www.uscs.org



"La Union, San Salvador"



"Lovely Cover"

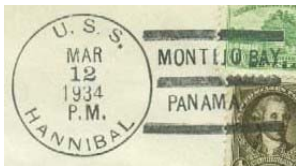
Labos Island Mexico (Misspelled, see Lobos Island)

Labuan Amok/Bali N.E.I.	08.5N	115.6E	<i>Augusta</i> 12/34
La Ceiba/Honduras	15.8N	86.8W	<i>Trenton</i> 9/35

La Coloma/Cuba	20.3N	75.3W	<i>Hannibal</i> 6/27
Lago Bay/Samoa	13.7N	172.1W (Samoa)	<i>Whippoorwill</i> ?
Lagos/Portugal	37.1N	08.7W	<i>Herbert</i> 2/40
La Guaira/Venezuela	10.6N	66.9W	<i>Fairfax</i> 5/36
La Gauira/Venez (Misspelled)			<i>Hannibal</i> 9/37
Lahaina/Maui	20.9N	156.7W	<i>Montgomery</i> 8/36
Lahaina/Hawaii			<i>Salt Lake City</i> 4/38
Lahaina/Terr.Hawaii			<i>Perkins</i> 2/37
Lahaina/Maui- T.H.			<i>Rathburne</i> 11/37
Lahaina Maui/T.H.			<i>Alden</i> 2/32
Lahaina-Rds/Maui T.H.			<i>Maryland</i> 2/32
Lahaina/Roads			<i>Pennsylvania</i> 4/37
Lahaina/Roads T.H.			<i>Houston</i> 4/40
La-Haina/Rds TH			<i>Memphis</i> 3/37
Lahaina/Rd, T.H.			<i>Pensacola</i> 4/38
Lake/Chas La (Lake Charles)	30.2N	93.2W	<i>Constitution</i> 3/32
La Libertad/El Salvador	13.5N	89.4W	<i>Manley</i> 8/36
Lanai/TH	20.8N	157.0W	<i>Trenton</i> 5/37
Lanakila Maui (as Navy Day/La---)	20.8N	156.7W	<i>Honolulu</i> 10/40
La Pallice/France	46.1N	01.2E	<i>Erie</i> 12/36
La-Pallice/France			<i>Kane</i> 7/37
La Paz/Mexico	24.3N	110.4W	<i>Perkins</i> 3/37
Larnaka/Cyprus (Larnaca)	34.9N	33.6E	<i>Des Moines</i> 12/15
Larsen Bay/Alaska	57.5N	154.0W	<i>Ortolan</i> 8/34
La Spezia/Italia	44.1N	09.8E	<i>Raleigh</i> 1/38
Latitude 00 (see Equator)			
Long 00-00/Lat 00-00			<i>Boise</i> 11/38
Other Latitude and Longitude combinations numerous.			
La Union/San Salvador	13.3N	87.8W	<i>Maryland</i> 1928
Laysan Island/Midway Gr	25.8N	171.7W	<i>Avocet</i> 2/34
Leghorn/Italy (Livorno)	43.6N	10.3E	<i>Dale</i> 9/35
Le Harve/France	49.5N	00.1E	<i>Vincennes</i> 5/37
Leith/Scotland	56.0N	03.2W	<i>Winslow</i> 6/37
Lewes/Del	38.8N	75.1W	<i>Savannah</i> 3/38
Lima/Peru (Callao)	12.1S	77.2W	<i>San Francisco</i> 5/36
Lime Bay (as Anchored/Lime Bay)			
(Likely Lyme Bay, England)	50.6N	03/1W	<i>Texas</i> ?
Limon Bay (Costa Rica)	10.0N	83.0W	<i>Pensacola</i> 4/34
Limon Bay/Panama	09.4N	79.9W	<i>Pensacola</i> ?
Lintin Island China	22.4N	113.8E	<i>Mindanao</i> 7/35
Lisbon/Portugal	38.7N	09.1W	<i>Hull</i> 6/35
Lisboa/Portugal			<i>Dickerson</i> 4/40
Lissahally/Ireland			
(correct: Lisahally Londonderry)	54.9N	07.3W	<i>Bristol</i> 5/42
Little America (Antarctica)	77.0S	165.0W	<i>Bear</i> 1/40
Little/America/1947-48			<i>Edisto</i> 1/48
Little Kiska/Alaska	51.9N	177.8E	<i>Kingfisher</i> 6/35
Little Sitkin/Alaska	52.0N	178.5E	<i>Kingfisher</i> 6/35
Little Tan/aga Alaska	51.8N	176.2W	<i>Quail</i> 7/34
Little Tanaga/Aleutians			<i>Oglala</i> 8/34
Liverpool/England	53.4N	03.0W	<i>Jacob Jones</i> 6/39
Livorno/Italy (Leghorn)	43.6N	10.3E	<i>Raleigh</i> 1/38
Lobos Bay Mexico	30.0N	113.0W	<i>Salem</i> 1914

Lobos Island/Mex	27.5N 110.5W	Tacoma 1914
Londonderry/Ireland (Lisahally)	54.9N 07.3W	Bristol 3/42
Lone Tree/Hill China (Yu Hsia Shan)	(12 miles N of Chinkiang)	Augusta 5/35
Long Beach/California	33.7N 118.2W	Richmond ?
Long Beach &/San Pedro		U.S. Fleet 12/34
Long Island/Sound	41.2N 73.0W	Selfridge 9/37
Longview/Washington	46.1N 123.0W	Constitution 8/33
Lorenzo Bay/Panama	08.3N 78.4W	Hannibal 4/34
Loring/Alaska	55.6N 131.5W	Brooks 7/35
Los Angeles/California	33.7N 118.3W	
Los Angeles/Harbor		Texas 2/37
Los Angeles/Harbor		Grebe 10/35
First Day/Olympic Games (X Olympiad, Los Angeles)		Pennsylvania 7/32
Lungmenhao/China	29.9N 106.6E	Tutuila 11/39
Lungmenhao/Lagoon		Tutuila 2/41
Luzon/Strait (Philippines)	21.0N 121.0E	Augusta 3/35
Lynhaven/Roads (Nahant Bay, Massachusetts)	42.5N 70.9W	Texas 9/36
Lynnhaven Bay/Va.	36.9N 76.1W	Michigan 1914
Lynnhaven/Rds Va		Indianapolis 2/36

Port Locations Letter "M" Many Naval Cover Collectors are veterans. www.uscs.org



"Montijo Bay, Panama"

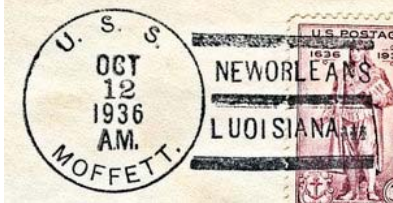
Macao/China (Macau)	22.2N 113.8E	Isabel 3/35
Macushin/Alaska (Makushin)	53.8N 167.0W	Quail 6/35
Magdalena/Bay (Mexico)	25.4N 112.0W	Houston 10/35
Makasser/Celebes	05.4S 119.4E	Canopus 5/38
Makushin Bay	53.7N 167.0W	Quail 6/35
Malaca Pass/B C (Malacca Pass-Lawyer Island)	54.0N 113.3W	Swallow 9/34
Malaga/Spain	36.7N 04.4W	Oklahoma 8/36
Malampaya/Palawan PI	11.0N 119.5E	Marblehead 3/38
Malampaya/P.I.		Augusta 4/37
Malampaya/Sound (Philippines)		Trenton 2/38
Male Atoll/Maldive Is.	04.2N 73.5E	Sacramento 2/39
Male/Maldive Is.		Sacramento 2/39
Malepalo/Ecuador	03.7S 80.7W	Sumner 11/40
Malta	36.0N 14.4E	Omaha 4/39
Manhattan/Beach Cal	33.9N 118.4W	Farragut 7/37
Mania-ielo/Cuba	23.2N 81.1W	Baltimore 2/16
Manila/Philippines	14.6N 121.0E	Smith Thompson ?
Manila Bay/Philippine Islands		Heron 1/36
Manila/Luzon PI		Ramapo 1/37
Manila/Phil. Isles		Jason 3/39
(Blank)/Manila Bay		Heron 2/39
Manila PI/Area		Edsall 2/34
Manila PI/Area (Misspelled)		Whipple 11/36
Manila/Area		Paul Jones 1/38
Manila PI		Marblehead 2/38
Manila/PI		Pecos 10/28
Iloilo to/Manila P.I.	(Unspecified)	Augusta 12/35
110 th Anniversary of/Battle of Manila Bay/"You May Fire When Ready Gridley"		Gridley 5/2008

Manopia/Cuba	20.7N	77.9W	<i>Hamilton</i> 9/33
Manua Samoa (as Flag Day/Manua Samoa) (Manu'a)	14.2S	169.5W	<i>Whippoorwill</i> 6/34
Manzanillo/Cuba	20.3N	77.1W	<i>Melville</i> 3/39
Manzanilla/Cuba (Misspelled)			<i>Rochester</i> 1/23
Manzanillo/Mexico	19.0N	104.3W	<i>Sturgeon</i> 10/38
Manzanita/Alaska	55.3N	131.0W	<i>Brooks</i> 7/35
Maquinaya P.I. (as Rifle Range/--)(Olongapo)	14.8N	120.2E	<i>Sacramento</i> 4/35
Marblehead/Mass.	42.5N	70.8W	<i>Texas</i> 7/39
Marcus/Island (Minamitori Shima, Japan)	24.3N	154.0E	<i>Bagley</i> 8/45
Mare Island/Vallejo Calif	38.1N	122.3W	<i>Yarnall</i> 10/33
Mare Island/California			<i>Relief</i> 3/34
Nare Island/Calif (Misspelled)			<i>Dorsey</i> 7/33
Mare Island/Navy Yard			<i>Tuna</i> 2/41
Mare Island/For Overhaul			<i>Relief</i> 3/34
Mare Island Xmas Day			<i>Sturgeon</i> 12/38
N.Y.M.I.			<i>Hull</i> 12/38
NY-MI/California			<i>Trenton</i> 2/36
Mare Island/Calif			<i>Pollack</i> 5/39
Mare Island/NYD.Calif			<i>Pompano</i> 7/39
Mare/Island			<i>Twiggs</i> 11/39
Mare/Island, Cal.			<i>Kilty</i> 2/40
Mare Isl./Cal.			<i>Montgomery</i> 11/39
Mare Isl'/California			<i>Henley</i> 9/39
NYD, Mare/ ID, Calif			<i>Dent</i> 2/37
Navy Yard/Mare, ID,			<i>McCall</i> 12/38
Armistice/Day/Mare Island, Calif.			<i>Aaron Ward</i> 11/32
Navy Day/Mare Island			<i>Aaron Ward</i> 10/32
Thanksgiving/Day/Mare Island, Calif.			<i>Aaron Ward</i> 11/32
USS Macon at/Mare Island			<i>Brooks</i> 7/34
Mariel/Cuba	23.0N	82.8W	<i>Hannibal</i> 3/30
Marine/Railway	(Location Unknown)		<i>Simpson</i> 5/35
Mariveles/P.I.	14.4N	120.5E	<i>Houston</i> 1/41
Mariveles/Bay P.I.			<i>Houston</i> 2/33
Marseille/France	43.3N	05.4E	<i>Raleigh</i> 2/26
Marseilles/France (Misspelled)			<i>Trenton</i> 8/37
Marshall Is/Navy Day (at Enewetak)	11.4N	162.3E	<i>Denebola</i> 10/45
Martinique/W.I.	14.6N	61.1W	<i>Hilary P. Jones</i> 2/41
Bon-Jour/Martinique			<i>Partridge</i> 1934
Massacre Bay	52.8N	173.2E	<i>Partridge</i> 1934
Matanzas/Cuba	23.0N	81.6W	<i>Claxton</i> 11/33
Matsuyama/Japan	33.8N	132.7E	<i>U.S. Navy</i> 10/45
Mattapoise/Harbor (Mattapoisett, MA)	41.7N	70.8W	<i>Potomac</i> 8/40
Maui/T.H.	20.5N	156.5W	<i>Broome</i> 4/38
Mayaguez/Porto Rico (Puerto Rico)	18.2N	67.2W	<i>Patoka</i> 5/25
Mazatlan/Mexico	23.2N	106.4W	<i>Glacier</i> 12/13
McCalla Field (Guantanamo)	20.0N	75.1W	<i>Fighting Squadron</i> 72 ?
Melbourne/Australia	37.8S	144.9E	<i>Augusta</i> 10/34
Melbourne/W. Australia (correct: Victoria, not Western)			<i>Augusta</i> 1934
Melones Is/R.P.	08.8N	79.6W	<i>Moffett</i> ?
Melville/R.I.	41.6N	71.3W	<i>Patoka</i> 11/32
Mentone/France	43.8N	07.5E	<i>Jacob Jones</i> 1/38
Mersina/Cilicia (Turkey)	36.8N	34.7E	<i>Sands</i> 4/22

Metlakatla/Alaska	55.1N	131.6W	<i>Brooks</i> 7/35
Mexico (likely Veracruz)	19.2N	96.0W	<i>Nebraska</i> 2/14
Miami/Florida	25.8N	80.2W	<i>Sea Raven</i> 2/40
Miami Fla/& the Gulf			<i>Dickerson</i> 4/35
ZRS5 Returns/Miami Fla (ZRS5 = <i>USS Macon</i>)			<i>Tillman</i> 5/34
Miami/Fla			<i>Madison</i> 12/40
Miami			<i>Taylor</i> 3/33
Good Bye/Miami (<i>USS Akron</i>)			<i>Mallard</i> 5/33
Navy Day/Miami Fla			<i>Richmond</i> 10/33
Michigan City/Indiana	41.7N	86.9W	<i>Hawk</i> 2/36
Midway Is./TH	27.1N	175.0W	<i>Aaron Ward</i> 5/35
Midway/Is			<i>Bainbridge</i> 5/35
Midway/Island			<i>Beaver</i> 5/35
Midway/Islands			<i>Avocet</i> 7/38
Midway Is/Area			<i>Oklahoma</i> 5/35
Welles Harbor/Midway			<i>Vega</i> 7/39
Midway Is/Hawaii			<i>Pelican</i> 12/38
Contacted/Midway			<i>Arizona</i> 5/35
Back From/Midway Isl			<i>Arizona</i> 5/35
Mother(s) Day/Midway Is-TH			<i>Brooks</i> 5/35
Mid-Way/Island			<i>Chester</i> 5/35
U.S.S. Cincinnati/Midway Islands			<i>Cincinnati</i> 5/35
Midway Island/Mother Day			<i>Hatfield</i> 5/35
Midway Isle/Mother Day			<i>Hatfield</i> 5/35
Enroute Mid/-way Isles			<i>Marblehead</i> 5/35
Off/Midway			<i>Maryland</i> 5/35
Off/Midway I.			<i>Maryland</i> 5/35
Off Midway/Island			<i>Perry</i> 5/37
Off Midway/Islands (fancy cancel)			<i>Richmond</i> 5/35
Off Midway/Islands (4-bar cancel)			<i>Richmond</i> 5/35
Midway/Islands (fancy cancel)			<i>Nautilus</i> 5/35
Midway Is/Pacific			<i>Pelican</i> 5/37
Midway Isle/TH			<i>Philip</i> 5/35
Midway-Is/T.H.			<i>Portland</i> 5/35
Midway			<i>Swan</i> 5/35
Welles Bar/Midway			<i>Vega</i> 7/39
Midway Island/Rebel Ship			<i>Tennessee</i> 5/35
Mindanao Straits (Likely Mindoro Straits)	12.3N	120.7 E	<i>Augusta</i> 11/35
Miiki/Japan		(Unable to identify)	<i>Gold Star</i> 3/37
Miraflores/Canal Zone (the Lock)	09.0N	79.6W	<i>Trenton</i> ?
Miraflores/Lock CZ			<i>Pennsylvania</i> 4/34
Mirs/Bay (China-now Tai Pang Wang)	22.5N	114.4E	<i>Augusta</i> 3/34
Miskito Cay/Nicaragua	14.3N	82.8W	<i>Hannibal</i> 3/15
Miskito Cays (Plural is correct)			<i>Hannibal</i> 2/16
Mobile/Alabama	30.7N	88.0W	<i>Perch</i> 2/37
Mobjack Bay (as Anchored/Mobjack Bay)(VA)	37.2N	76.4W	<i>Leary</i> 3/35
Monrovia/Liberia	06.3N	10.8E	<i>Boise</i> 10/38
Montauk Pt./L.I.	41.1N	71.9W	<i>Porpoise</i> 5/36
Monterey/California	36.6N	121.9W	<i>Oklahoma</i> 11/37
Monterey/Bay Calif			<i>Swordfish</i> 10/39
Monterey/Harbor			<i>Constitution</i> 10/33
Montevideo/Uruaguay (Misspelled)	34.9S	56.2W	<i>Phoenix</i> 1/39
Montevideo/Uruguay			<i>Helena</i> 2/40

Greetings/Montevideo			<i>Tuscaloosa</i> 11/34
Montijo Bay/Panama	07.8N	81.1W	<i>Hannibal</i> 3/34
Montreal/Canada	45.5N	73.5W	<i>Dunlap</i> 9/37
Montuosa/Panama	07.5N	82.2W	<i>Hannibal</i> 7/35
Mopansh/Hun China	112 miles above Hankow		<i>Oahu</i> 1/32
Morehead/City NC.	34.7N	76.7W	<i>Tambor</i> 8/40
Moudania/Turkey (Nea Moudania)	40.2N	23.3E	<i>Eagle One</i> 4/20
Mount Hope/Canal Zone	09.3N	79.8W	<i>Mallard</i> 1/35
Mount Vernon (as Enroute/Mt. Vernon)(VA)	38.6N	77.1W	<i>Potomac</i> 6/39
Moville/Ireland	55.1N	07.1W	<i>Bristol</i> 7/42
Mud Fort/Barrier (China)(Near Chinking)	32.2N	119.5E	<i>Luzon</i> 3/39
Muerto Id (as Enroute Muerto Id)	(Unable to find, probably Panama)		<i>Dixie</i> 12/17
Mudros Bay (Mudros Turkey)	39.9N	25.3E	<i>Bruce</i> ?
Mupanshih/Hun. China	28.1N	112.9E	<i>Oahu</i> ?

Port Locations "N" New collectors should read the [USCS LOG](http://www.uscs.org) articles for loads of info. www.uscs.org



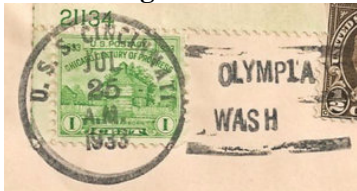
"NewOrleans, Luoisiana" (Misspelled)

Nagasaki/Japan	32.7N	129.9E	<i>Pittsburgh</i> 7/29
Nagasaki/Kyushu			<i>Suwanee</i> 9/45
Nagoya/Japan	35.2N	136.9E	<i>James O'Hara</i> 9/48
Naniamo/B.C.	49.2N	124.0W	<i>Chandler</i> 5/36
Nanking/China	32.1N	118.7E	<i>Palos</i> 4/34
Nanking/Hunan China			<i>Oahu</i> 2/36
Nanking/Kiangsi China			<i>Oahu</i> 2/35
Namking/China (Misspelled)			<i>Tulsa</i> 6/33
Nanking China/Capital City			<i>Monocacy</i> 7/35
Nantes/France	47.2N	01.6E	<i>Jacob Jones</i> ?
Naples/Italy	40.8N	14.3E	<i>Sacramento</i> 4/39
Napoli/Italia			<i>Raleigh</i> 2/38
Napoopoo/Hawaii (Honaunau-Napoopoo)	19.5N	155.6W	<i>Houston</i> 7/34
Nare/Island/Calif (see Mare Island)			
Narragansett/Bay	41.6N	71.4W	<i>Relief</i> 6/34
Nassau/Bahamas	25.1N	77.3W	<i>Wichita</i> 6/39
Nassau New/Prov. Isl			<i>Pike</i> 6/36
Naval/Academy (as US Naval/Academy)	39.0N	76.5W	<i>Reina Mercedes</i> 5/41
U.S. Naval/Academy			<i>Babbitt</i> 7/35
Naval Academy/Annapolis, Md.			<i>Babbitt</i> 8/35
Stationship/U.S.N.A.			<i>Reina Mercedes</i> 5/41
Naval Hospital (U.S) Caracao, P.I.(Canacao)	14.5N	120.9E	
Nawiliwili/Kauai T.H.	22.0N	159.4W	<i>Whippoorwill</i> 6/37
N E Pacific/Triangle (as 1935 in N E/---)			<i>Pennsylvania</i> 5/35
Newark/New Jersey	40.7N	74.2W	
New Bedford/Mass	41.6N	70.9W	<i>Manley</i> 5/34
At New/Bedford			<i>Simpson</i> 7/34
U S W V/New Bedford (United Spanish War Veterans)			<i>Badger</i> 6/35
Whaling City (could be New Bedford or New London, CT)			<i>Roper</i> 5/34
New Haven/Conn	41.3N	72.9W	<i>Wyoming</i> 10/38
New Haven/Tercentenary			<i>Tattnall</i> 5/38
R.O.T.C. Cruise/New Haven			<i>Tattnall</i> 7/35

New London/Conn	41.3N	72.1W	<i>Pike</i> 8/36
New London/Con			<i>Thomas</i> 8/40
Submarine Base/New London			<i>Bushnell</i> ?
Navy Day/New London			<i>Semmes</i> 10/36
New London/Sub-Base, Ct			<i>Pollack</i> 8/37
New London/Ct			<i>Sargo</i> 3/39
New/London*Ct			<i>Luce</i> 9/30
N.L. Conn/Navy Day			<i>PC-451</i> 10/40
Tercenteny/New London (Misspelled) (CON in dial)			<i>Badger</i> 9/35
New Orleans/Louisiana	30.0N	90.0W	<i>New Orleans</i> 4/35
NewOrleans/Luoisiana (Misspelled)			<i>Moffett</i> 10/36
(Note: Covers exist on same day from <i>Moffett</i> with correct spelling.)			
Arrived/New Orleans			<i>Porpoise</i> 4/36
Navy Day/New Orleans			<i>Wyoming</i> 10/34
New Orleans/Mardi Gras			<i>Schenck</i> 3/35
Thanksgiving/New Orleans			<i>Babbitt</i> 11/34
12-Mile-Point./Miss. River (New Orleans)			<i>New Orleans</i> 3/35
Newport/Beach	33.6N	117.9W	<i>Claxton</i> ?
Newport/News Va.	37.0N	76.3W	<i>Constitution</i> 10/31
Newport/Oregon	44.6N	124.0W	<i>Upshur</i> 7/33
Newport/Rhode Island	41.5N	71.3W	<i>Moffett</i> 11/36
Newport/Rhode Is			<i>MacKenzie</i> 3/40
Newport/R.I.			<i>Sealion</i> 3/40
Newport R.I./Navy Day			<i>Cherokee</i> 7/40
New Rochelle/New York	40.9N	73.8W	<i>Tattnall</i> 6/38
New York/New York	40.7N	74.0W	<i>Concord</i> ?
New York/N.Y.			<i>Potomac</i> 4/39
New York			<i>Altair</i> 5/27
New York			<i>Dickerson</i> 12/40
96 th Street/NY City NY			<i>Overton</i> 2/35
125 th Street/New York			<i>Dahlgren</i> ?
North River/New York NY			<i>Erie</i> 9/37
Foot W. 96 th St/North River NY			<i>Eagle</i> 48 8/35
New York/Hudson River			<i>Indianapolis</i> 9/36
Navy Yard/New York			<i>Tattnall</i> 5/30
New York/79 th Street			<i>Texas</i> 7/34
Good Bye/New York NY			<i>Hull</i> 5/35
LDPS/New York City, NY			<i>Fargo</i> 1/50
New York Hosp/Charter 1771			<i>Relief</i> 6/34
Hospital Ship/New York, NY			<i>Relief</i> 6/34
At NY For/World Fair			<i>Brooklyn</i> 4/39
NYD/New York			<i>Cherokee</i> 7/40
At Sea/*New York*			<i>Ellis</i> 8/35
N.Y. Fleet/Review.			<i>Goff</i> 6/34
Recommiss/ioned NYD NY			<i>William B. Preston</i> 6/40
Church Street Annex (New York USPO Cancel)			<i>Iowa</i> 8/42
Nice/France	43.7N	07.3E	<i>Quincy</i> 8/36
Nicaragua (as Survey Area/--)	12.0N	85.5W	<i>Hannibal</i> 5/37
Niihau/T.H.	21.9N	160.2W	<i>Trenton</i> 5/37
Nihau/T.H. (Misspelled)			<i>Trenton</i> 7/37
Nikolski/Aleutian Is.	53.0N	168.9W	<i>Swallow</i> 7/34
Nimrod/Sound China	29.5N	121.5E	<i>Canopus</i> 11/35
Ningpo/China	29.9N	121.6E	

Nipe Bay/Cuba	20.9N	75.5W	<i>Badger</i> 12/33
Nipe Bay			<i>McFarland</i> 11/33
Niue Island			<i>Staten Island</i> 4/59
Nkow/China (likely Hankow)			<i>Guam</i> 5/35
Nome/Alaska	64.5N	165.4W	
Norfolk/Virginia	36.9N	76.3W	<i>Yukon</i> 3/40
Norfolk/Va.			<i>Luce</i> 9/30
Norfolk, Va/ F.D.P.S.			<i>PC-451</i> 10/40
Norfolk, Va/1 st . Day Canc			<i>PC-451</i> 10/40
Norfolk/V.A.			<i>Savannah</i> 4/38
V-7 Cruise/Norfolk Va			<i>Vincennes</i> 3/40
N.O.B. Norfolk/Virginia			<i>Branch</i> 1/40
NOB.Norfolk/Va			<i>Fairfax</i> 12/38
Nav. Oper. Base/Norfolk, Va			<i>Owl</i> 8/35
Norfolk/Navy Yard			<i>Bagley</i> 6/38
Navy Yard/Norfolk Va			<i>Fairfax</i> 4/37
Navy Yard/Norfolk, Va			<i>Fairfax</i> 8/35
Navy Yard/Norfolk*Vir			<i>Fairfax</i> 4/37
Navyyard/Norfolk, Va (Navyyard one word)			<i>Tattnall</i> 10/36
Norfolk Nav Yd/Portsmouth Va			<i>J. Fred Talbot</i> 1/35
Hamp.Roads/Norfolk			<i>Nashville</i> 7/38
Launchings/Norfolk N, Y, (Navy Yard)			<i>Jacob Jones</i> 8/40
Enroute/Norfolk			<i>Haraden</i> 2/40
Enroute/Norfolk-Va			<i>Roper</i> 3/39
At Sea First Flight/to Norfolk Va			<i>Northampton</i> 8/34
North Atlantic	(Unspecified)		<i>Mississippi</i> 10/41
North/China	(Unspecified)		<i>Pope</i> 9/39
No Ireland (as US NOB/No Ireland)	55.3N	07.3W	<i>Bristol</i> 5/42
N. E. Bight/Alaska	55.0N	160.0W	<i>Oglala</i> 8/34
North/Pole	90.0N	0-180.0E/W	<i>Bluefish</i> 5/75
North/Sea	(Unspecified)		<i>Arkansas</i> 6/35
Northwest/Cruise	(Unspecified)		<i>Pennsylvania</i> 8/37
Noumea New/Caledonia	22.3N	166.4E	<i>Astoria</i> 8/34
Nueva Gerona/Cuba	21.9N	82.8W	<i>Claxton</i> 11/33
Nuevitas/Cuba	21.5N	77.2W	<i>Sturtevant</i> 9/33

Port Listings Letter "O" Over 1200 members cannot be wrong...join USCS. www.uscs.org

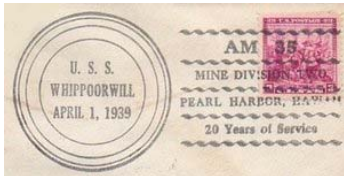


"Olymp1a, Washington"

Oahu (as Welcome/To Oahu)	21.2N	157.9W	<i>Richmond</i> ?
Oakland/California	37.8N	122.3W	<i>Chandler</i> 5/32
Oakland Calif Navy Day			<i>Tuscaloosa</i> 10/35
Navy Day/Oakland Cal			<i>Pensacola</i> 10/33
Ochang/China	30.4N	114.8E	<i>Tutuila</i> 3/36
Ofu Manua/Samoa	14.2S	169.7W	<i>Whippoorwill</i> 7/34
Ofu Is./Manu'a Gr			<i>Ontario</i> 8/38
Oglodak/Alaska	51.9N	175.4W	<i>Quail</i> 8/34
Okinawa/Japan	26.2N	127.6E	<i>Montour</i> 1/46
Okinawa/Ryuku Is (Misspelled)			<i>Holland</i> 2/46
Old E. Bay/Haiti	18.2 N	23.8W	<i>Pensacola</i> 2/39

Old Pt Comfort/Virginia	37.0N 76.3W	<i>Relief</i> 8/34
Old Providen/ce Island Col (Colombia)	13.3N 81.4W	<i>Fairfax</i> 6/36
Olongapo/P.I. (Subic Bay)	14.8N 120.3E	<i>Stewart</i> 6/40
Olongapo/Zambales P.I.		<i>Genesee</i> 4/38
Dewey Dock/Olongapo P I		<i>Black Hawk</i> 2/34
Navy Yard/Olongapo PI		<i>Stewart</i> 3/34
U. S. Navy/Olongopo		<i>Bulmer</i> 1/38
Olosega Is/Manu'a	14.2S 169.6W	<i>Whippoorwill</i> 7/34
Olympia/Washington	47.0N 122.9W	<i>Constitution</i> 6/33
Olymp1a/Washington (1 vice i)		<i>Cincinnati</i> 7/33
Ominato (Japan) (in dial)	41.3N 161.2E	<i>Chandeleur</i> 9/45
180 th /Meridian	180.0 E or W (Latitude unknown)	<i>Henderson</i> 1/36
Internat'l/Date Line	(Latitude unknown)	<i>Ramapo</i> 4/38
Where/Time Begins	(Latitude unknown)	<i>Nitro</i> 3/41
Crossed Line/Westbound	(Latitude unknown)	<i>Chaumont</i> 11/36
Oporto/Portugal	41.1N 08.6W	<i>Aylwin</i> 6/35
Oran/Algeria	35.7N 00.6W	<i>Raleigh</i> 7/37
Orange/Texas	30.1N 93.6W	<i>Constitution</i> 3/32
Oregon (as Off Oregon/Coast)	(Unspecified)	<i>Constitution</i> 8/33
Oriental/Ports	(Unspecified)	<i>Pillsbury</i> ?
Oslo/Norway	59.9N 10.8E	<i>Winslow</i> 5/37
Ostende/Belgium	51.2N 02.9E	<i>Charles Ausburne</i> 5/26
Otoque Bay/Gulf of Panama	08.6N 79.6W	<i>Hannibal</i> 2/33
Otoque Isle/Gulf of Panama		<i>Hannibal</i> 2/33
Overseas Mail	(Unspecified)	<i>Madawaska</i> WWI
Ox Liver Gorge China (Horse Lung)	30.8N 111.5E	<i>Oahu</i> 8/31
Oyster Bay/NY	40.9N 73.5W	<i>Rathburne</i> 7/34
Oyster Bay/Navy Day		<i>Taylor</i> 10/36

Port Locations Letter "P" Possible topics of Naval Cover Collecting are endless. www.uscs.org



"AM 35, Mine Division Two, Pearl Harbor Hawaii, 20 Years of Service"

Pacific Coast (of the USA)		
Pacific Locks/Panama Canal	09.0N 79.8W	<i>Pennsylvania</i> 8/31
Pacific (as Mid Pacific/Enroute T.H.)	(Unspecified)	<i>Langley</i> 10/37
Pacific Station	(Unspecified)	<i>Manley</i> 7/28
PAC Triangle	(Unspecified)	
1935 in N E/Pacific Triangle	(Unspecified)	<i>Pennsylvania</i> 1935
Pagoda/China	55.5N 155.5E	<i>Asheville</i> 5/34
Pagoda/Anchorage		<i>Smith Thompson</i> 4/33
Pago/Pago/Tutuila/Samoa	14.3S 170.7W	<i>Argonaut</i> 7/40
Depart/Pago Pago/Samoa (fancy cancel)		<i>Argonaut</i> 7/40
Pago Pago/Samoa		<i>Pompano</i> 11/39
Pago Pago/Somoa (Misspelled)		<i>Chicago</i> 5/31
Pago/Am. Samoa		<i>Bushnell</i> 10/32
Pago-Pago/Samoa		<i>Astoria</i> 7/34
Pago Pago/Samoa Is.		<i>Bear</i> 11/40
Enroute/Pago Pago		<i>Mississippi</i> 8/23
Labor Day/Samoa		<i>Whippoorwill</i> 9/34
Mothers Day/Samoa		<i>Whippoorwill</i> 5/34
Samoa		<i>Whippoorwill</i> 9/34

Pa-Ho/China (means river bank) (see: Hwangshikong)			
Paichow/China (Paichou)(Sha-Shih)	30.3N	112.1E	<i>Tutuila</i> 11/35
Pailochi Hun/Red China	130 Miles above	Hankow	<i>Oahu</i> 1/32
Paithao (likely Peitaho)	32.1N	118.7E	
Paknam/Gulf of Siam	10.4N	99.3E	<i>Augusta</i> 10/35
Palau/Invaded (also Captured) (comm cover NJ not there)			<i>New Jersey</i> 9/44
Palau/Raided (NJ in task force)			<i>New Jersey</i> 3/44
Palau/Captured			<i>New Jersey</i> 10/44
Palawan/Island (Philippines)	09.7N	118.7E	<i>Trenton</i> 2/38
Palermo/Sicily	38.1N	13.4E	<i>Reid</i> 2/37
Palermo/Sicilia			<i>Raleigh</i> 2/38
Palma/Majorca Isl	39.6N	02.6E	<i>Quincy</i> 8/36
Palma/Spain			<i>Oklahoma</i> 8/36
Palmer/Land (Antarctica)	68 to 75S	60W	<i>Bear</i> 3/40
Palmyra/Island	05.9N	162.1W	<i>Honolulu</i> 4/40
Palmyra/Island T H			<i>Wright</i> 11/35
Panama	(Unspecified)		<i>Kane</i> 5/36
Panama/Bay	(Unspecified)		<i>Contocock</i> ?
Panama/Canal Zone (see Canal Zone)			
P. C. Transit/4 Hours.38 Min			<i>Manley</i> ?
Minesweeping/Pan-Canal (also Maneuvers)			<i>Grebe</i> ?
Enroute/Panama Canal	(Unspecified)		<i>Relief</i> 4/34
Transit Canal/13 HR 28 Min			<i>Sculpin</i> 2/40
Panama City/Fla	30.1N	85.7W	<i>Skipjack</i> 9/28
Panamanian/Waters	(Unspecified)		<i>Fulton</i> 6/31
Penang/China (likely Pulau Pinang, Malaysia)	05.3N	100.4E	<i>Pope</i> 4/39
Papano/Cotobato (Philippines)	07.3N	124.2E	<i>Black Hawk</i> 10/39
Papeete/Tahiti	17.5S	149.6W	<i>Pompano</i> 11/39
Para/Brazil (old name for Belem)	01.5S	48.5W	<i>Rhind</i> 3/40
Para.Belem/Brazil			<i>Sargo</i> 5/39
Paramaribo/Dutch Guiana	05.8N	55.1W	<i>Wainwright</i> 7/42
Parang/Cotobato (Philippines)	07.4N	124.2E	<i>Black Hawk</i> 10/39
Parang/P.I.			<i>Pope</i> 4/39
Paris/France (probably a slogan not a location, refers to Lindbergh cachet)			
Parita Bay/Gulf of Panama	08.1N	80.4W	<i>Hannibal</i> 2/33
Parris Isl/S.C.	32.3N	80.7W	<i>Antares</i> 12/37
Pascagoula (as in Commissioning Day/Pascagoula, Ms 39568)	30.3N	88.6W	<i>Boxer</i> 2/95
Pearl City/Oahu T. H.	21.4N	158.0W	<i>Hull</i> 5/37
Pearl City/T. Hawaii			<i>Barry</i> 5/37
Perlas Is/lands R.P. (Panama)	08.5N	78.9W	<i>Trenton</i> 5/35
Pearl Harbor/Hawaii	21.4N	157.9W	<i>Chew</i> 1/41
Pearl Harbor			<i>Nautilus</i> 2/39
Pearl Harbor/T.H.			<i>Turkey</i> 5/40
Pearl Harbor/Oahu TH			<i>Talbot</i> 7/38
Pearl Harbor/Oahu			<i>Sicard</i> 3/39
Pearl Harbor/Honolulu T.H.			<i>Langley</i> ?
Pearl/Harbor T.H.			<i>Seadragon</i> 10/40
Pearl/Hbr TH			<i>Farenholt</i> 4/28
Sub Base/Pearl Harbor			<i>Sea Gull</i> 5/39
Sub Base/P.H.T.H.			<i>Pike</i> 5/39
Sub Base/Pearl-Hbr, T.H.			<i>Pollock</i> (sp) 7/39
Pearl Harbor/Hawaii NYD			<i>Louisville</i> 12/36
Navy Day at/Pearl Harbor			<i>Sea Gull</i> 10/34

Pearl and/Hermes Reef			<i>Avocet</i> 4/36
AM 35/Mine Division Two/Pearl Harbor, Hawaii/20 Years of Service			<i>Whippoorwill</i> 4/39
S B Pearl/Harbor T H			<i>Richmond</i> 4/40
Pearl Hermes/Reef T.H.	27.9N	175.8W	<i>Tanager</i> 4/36
Pearl And/Hermes Reef			<i>Avocet</i> 4/36
Pearl/Island R.P. (as Off)	08.5N	78.9W	<i>Indianapolis</i> 9/33
Pearl River/South China	22.8N	113.6E	<i>Mindanao</i> 4/39
Pechili Gulf/North China (Pohai)	38.7N	120.0E	<i>Augusta</i> 8/35
Pedro Miguel/Canal Zone	09.0N	79.6W	<i>Pennsylvania</i> 8/31
Transit Ped/Miguel Locks			<i>Constitution</i> 4/34
Peitaiho/China (Peitaiho)	39.9N	119.4E	<i>Peary</i> 9.37
Penang/Straits S.	05.5N	100.4E	<i>Sacramento</i> 1/38
Pensacola/Florida	30.4N	87.2W	<i>Tarpon</i> 5/36
Perim/Arabia (Aden Protectorate) (Yemen)	12.7N	45.0E	<i>Brooklyn</i> 11/15
Perlas Is/Panama Bay	08.3N	79.0W	<i>Barracuda Div</i> 8 ?
Perlos/Isl			<i>Houston</i> 10/35
Perlas/Islands R.P. (as Off ---)			<i>Fairfax</i> 1/37
Pernambuco/Brazil (now Recife)	08.0S	34.9W	<i>Cassin</i> 5/37
Perth Amboy/New Jersey	40.5N	74.3W	<i>Bainbridge</i> 10/32
Peru (as Off Coast of Peru)	(Unspecified)		<i>Indianapolis</i> 1933
Petersburg/Alaska	56.8N	133.0W	<i>Philip</i> 7/35
Phaeos/Greece (likely Paros)	37.1N	25.2E	<i>Detroit</i> 3/28
Philadelphia/Penn	39.9N	75.1W	<i>Albemarle</i> 12/40
Phila./Penna.			<i>Biddle</i> 11/39
Phila, Pa			<i>Cole</i> 11/39
Phila.Pa			<i>DuPont</i> 7/34
Phila- -Pa-			<i>Blakeley</i> 11/39
Phila, Pa/Navyyard			<i>Herbert</i> 2/35
Farewell/Phila, Pa			<i>Aylwin</i> 10/35
Leaving/Phila, PA.			<i>Savannah</i> 4/38
Navy Yard/Phila Pa			<i>Wichita</i> 5/39
Navy Yard/Philadelphia			<i>New Mexico</i> 9/31
Navy Yard/Phila Penn.			<i>Kane</i> 4/38
Navyyard/Phila, Penn (Navyyard one word)			<i>Tattnall</i> 9/36
Phil/Harbor			<i>John Francis Burns</i> ?
Middycruise/Phila Pa			<i>Fairfax</i> 7/35
Middies 2 nd /Visit Phila			<i>Babbitt</i> 7/35
Last Cruise/Phila Pa			<i>Fairfax</i> 8/35
Pier 11/Phila Pa.			<i>Herbert</i> 4/35
16 th St & Pratt Avenue (Philadelphia)			<i>U. S. Naval Hospital</i>
J6 & Pattison/Ave (J6 should be 16 th)			<i>Naval Hospital</i>
Keel Laid/New Cruiser/Philadelphia			<i>Herbert</i> 5/35
U.S.S. Nashville/Commissioned/Navyyard, Phila			<i>Nashville</i> 6/38
Admiral Dewey's Flagship/Celebrates Launching/U.S.S. Olympia (SSN-717)			<i>Flagship Olympia</i> 4/83
Tall Ships '82/June 17-21, 1982/Philadelphia, PA			<i>Tattnall</i> 6/82
DESRON 1/DIV 28/Phila 'PA			<i>Herbert</i> 11/35
Philippine/Islands	(Unspecified)		<i>Pillsbury</i> 5/38
Philippine/Commonwealth	(Unspecified)		<i>Black Hawk</i> 11/35
Common/Wealth P.I.			<i>Augusta</i> 11/35
Phoenix Is (as Enroute Phoenix Is)	(Unspecified, but about 03S 172W)		<i>Colorado</i> 7/37
Pichilique/Mexico	16.8N	99.8W	<i>Perkins</i> 3/37
Pechilique/Mexico			<i>Cushing</i> 3/37
Pinas Bay/Colombia (Likely Bahia Pinas, Darien, Panama)			

	09.4N	79.9W	<i>Hannibal</i> 7/33
Pinas Bay/Rep. Panama Area			<i>Hannibal</i> 1933
Piney Point/Maryland	38.1N	76.5W	<i>Colorado</i> 1934
Piraeus/Greece	37.9N	23.6E	<i>Reid</i> 1/37
Pittsburg/Calif	38.0N	121.9W	<i>Trever</i> 7/36
Plymouth/England	50.4N	04.2W	<i>Arkansas</i> 6/36
Enroute/Plymouth Eng			<i>Erie</i> 11/38
Plymouth/Mass	42.0N	70.7W	<i>Chandler</i> 7/34
Pohai Gulf/China (Gulf of Pechili)	38.7N	120.0E	<i>Augusta</i> 8/35
Pointe Pitre/Guadeloupe	16.2N	61.5W	<i>Shark</i> 4/36
Point Fermin Light (as Off Point --)(California)	33.7N	118.3W	<i>Northampton</i> 4/34
Point Quanico/R.P. (see Port Guanico)	07.3N	80.3W	<i>Galveston</i> 1925
Point Sur/Calif	36.3N	121.9W	<i>Northampton</i> 2/35
Polillo/Island PI	15.0N	122.1E	<i>Barker</i> 1/38
Polloc/Harbor – P.I.	07.4N	124.2W	<i>Canopus</i> 6/38
Ponce/Puerto Rico	18.0N	66.6W	<i>Trenton</i> ?
Ponce/Porto Rico			<i>Mayrant</i> 1/40
Ponta Del Gada/Azores	37.7N	25.7W	<i>McDougal</i> 3/37
Ponta Delgado/Azores			<i>Saint Louis</i> 8/39
Pontainak/Borneo (Kota Khatulistiwa, Indonesia)	00.1S	109.3E	<i>Augusta</i> 10/35
Port Angeles/Washington	48.1N	123.4W	<i>Trever</i> 7/37
Port Angeles			<i>Nevada</i> 7/26
Port Angles/Washington (Misspelled)		<i>Preble</i> 8/35	
Port Antonio/Jamaica	18.2N	76.4W	<i>Chandler</i> 3/39
Port Apra/Guam	13.4N	144.7E	<i>Ramapo</i> 12/36
Port Apra/Guam M.I.			<i>Gold Star</i> 8/38
Port Apra/Guam MI			<i>Gold Star</i> 1/30
Port-Apra/Guam M.I.			<i>Ramapo</i> 8/36
Port Aransas/Texas	27.8N	97.1W	<i>Moffett</i> 5/37
Portaransas/Tex			<i>Potomac</i> 5-7-37
Port Arthur/Texas	29.8N	94.0W	<i>Winslow</i> 4/39
Port au Prince/Haiti	18.6N	72.3W	<i>Woodcock</i> 11/33
Port-Au-/Prince Haiti			<i>Zane</i> 4/34
Portaprince/Haiti (Misspelled)			<i>Washington</i> 9/15
Pt Au Prince/Haiti			<i>Georgia</i> 8/14
Port au Spain/Trinidad	10.7N	61.5W	<i>Hannibal</i> 2/38
Port of Spain/Trinidad BWI			<i>Hannibal</i> 11/31
Port Cortez/Honduras (Puerto Cortes)	15.8N	87.9W	<i>Manley</i> 4/36
Port Everglades Fla (Fort Lauderdale)	26.1N	80.1W	<i>Antares</i> 7/34
Port/Guanico R.P. (see also: Port Quanico)	07.3N	80.3W	<i>Galveston</i> 11/25
Port Isabel/Texas	26.1N	97.2W	<i>Moffett</i> 5/37
Port/Jefferson NY	40.9N	73.1W	<i>Lea</i> 7/34
Portland Bight/Jamaica	17.9N	77.1W	(Unknown)
Portland/England	50.6N	02.4W	<i>Nashville</i> 9/38
Portland/Maine	43.7N	70.2W	<i>Portland</i> 8/34
Portland/Oregon	45.5N	122.7W	<i>Portland</i> 10/33
The City of Roses			<i>Chandler</i> 3/36
Portland/Fleet Week			<i>Southard</i> 8/36
Portland/Oregon (Misspelled)			<i>Northampton</i> 7/37
Port Limon/Costa Rica	10.0N	83.0W	<i>Nokomis</i> 10/37
Porto Barrios/Guatemala (Puerto)	15.7N	88.6W	<i>Fairfax</i> 6/36
Portobelo/Colombia (today it is in Panama)	09.6N	79.7W	<i>Hannibal</i> 7/13
Porto Bello/Panama			<i>Hannibal</i> 7/13

Port/Quanico R.P. (Port Guanico)	07.3	80.3W	<i>Galveston</i> 11/25
Port Orch/Wash. (Orchard)	47.5N	122.6W	<i>McCall</i> 8/38
Port Said/Egypt	31.3N	32.3E	<i>Sacramento</i> 3/39
Port San Luis (as Off Port/San--)(California)	35.1N	120.7W	<i>Constitution</i> 10/33
Portsmouth/England	50.8N	01.1W	<i>Wyoming</i> 6/36
Portsmouth/N.H. (actually in Maine)	43.1N	70.7W	<i>Seadragon</i> 1/40
Portsmouth/New Hamp			<i>Falcon</i> 3/41
Navy Yard/Ptsmth NH			<i>Falcon</i> ?
Navy Yard/PTMS			<i>Memphis</i> 9/34
Navy Yard/Portsmouth			<i>Henderson</i> 6/37
NNY P'Mouth/Va			<i>Leary</i> 4/39
Easter at/Ports NH			<i>Snapper</i> 4/39
Ports, N.H./Navy Day			<i>Saury</i> 10/39
Naval/Shipyard/Bicentennial			<i>Maine</i> 6/2000
Portsmouth/Virginia	36.8N	76.3W	<i>Bowditch</i> 9/40
Portsmouth/Va.			<i>PC-451</i> 12/40
Portsmouth Va/			<i>Morris</i> 10/40
Portsmouth/Virgini (Misspelled)			<i>Goff</i> 6/39
Navy Yard/Pt's Va.			<i>Northampton</i> ?
Navy Yard/PTMS Va			<i>Memphis</i> 9/34
Navy Yard/Ports, Va.			<i>DuPont</i> 5/40
N.N. Yard/Ports Va			<i>Ranger</i> 1/35
Port St. Joe/Florida	29.8N	85.3W	<i>Patoka</i> 1/29
Port Town/send Wash	48.1N	122.8W	<i>Constitution</i> 7/33
Portugal (as Enroute/Portugal)	(Unspecified)		<i>Aylwin</i> 5/35
P.O. Bay/Galapagos Is. (Post Office)	01.3S	90.5W	<i>Bagley</i> 9/39
Poughkeepsie/New York	41.7N	73.9W	<i>Selfridge</i> 9/37
Poughkeepsie/NY			<i>Dunlap</i> 10/37
President/Roads (mouth Charles River, Boston)	42.3N	71.0W	<i>North Carolina</i> 6/15
Presidential/Fishing Trip	(Unspecified)		<i>Monaghan</i> 4/36
Pribloffs/Alaska (Pribilofs)	57.2N	170.3W	<i>Vega</i> 7/33
Pribloff Is/St Paul Is			<i>(Unknown)</i>
Princapolca/Nicaragua (Prinzapolka)	13.4N	83.6W	<i>Hannibal</i> 3/14
Prince/Rupert BC (British Colombia)	54.3N	130.3W	<i>Avocet</i> 8/34
Progreso/Mexico	21.3N	89.8W	<i>Wheeling</i> 1916
Progreso/Yukatan (Misspelled)			<i>Petrel</i> 11/14
Providence (as State Pier/Providence)	41.8N	71.4W	<i>Tillman</i> 10/35
Provincetown/Mass	42.0N	70.2W	<i>Lawrence</i> 7/34
Provincetown/Mass (Misspelled)			<i>Leary</i> 7/34
Provincetown/Mass (Misspelled)			<i>Preble</i> 7/34
Pt. Armuelles/R D Panama	08.2N	82.9W	<i>Taylor</i> 2/38
Pt Barco/Venezuela	12/1N	69.9W	<i>Bushnell</i> 4/40
Pt. Belgrano/Argentina (Puerto Belgrano)	38.9S	621W	<i>Davis</i> 2/39
Pto. Cabezas/Nicaragua (Puerto)	14.2N	83.4W	<i>Sacramento</i> 7/34
Pto (C)abezas/Nic			<i>Sacramento</i>
Puerto/Cabezas Nic (Pto)			<i>Asheville</i> 5/31
Pto. Colombia/Colombia (Puerto)	11.0N	75.0W	<i>Manley</i> 5/36
Puerto Col/ombia Col.			<i>Fairfax</i> 5/36
Pto Cortes/Honduras (Puerto)	15.8N	87.9W	<i>Sacramento</i> 7/31
Pt. Cortez/Honduras			<i>Tulsa</i> 11/24
Puertobanes/Cuba (Embarcadero de Banes)	20.9N	75.7W	<i>Cole</i> 10/33
Puerto Barrios Guat (also Porto)(Guatemala)	15.7N	88.6W	<i>(Unknown)</i>
Puerto Castilla R. H. (Honduras)	16.0N	85.9W	<i>Teal</i> 9/35

Puerto Mexico (Coatzacoalcos)	18.1N	94.4W	Salem 1914
Puerto Padre/Cuba	21.2N	76.6W	McFarland 9/33
Puerto Princesa P.I.	09.7N	118.7E	Parrott 6/40
Puget Sound/Washington	47.6N	122.7W	Portland 4/35
Puget*Sound/*Wash*			Maryland 4/36
Navy Yard/Puget Sound (Bremerton)			Jarvis 10/37
Xmas Day/NYPS Wash			Swallow 12/33
Greetings/N.Y.P.S. WN			Arizona 12/35
P.S.N.Y./Bremerton			Patterson 9/37
Pukow/China (Pukou)	32.1N	118.7E	Monocacy 10/34
Puntarenas/Costa Rica	10.0N	84.8W	Sturgeon 11/38
Punta Renas/Costa Rica			Taylor 2/38
Pyramid Cove/San Clemente IIs	32.8N	118.3W	Northampton 3/34

Port Listings Letter "Q" Quite a hobby that has such an international following? www.uscs.org



"Quebec, Canada"

Quantico/Virginia	38.5N	77.3W	Antares 1/35
5 th Reg/Quantico, VA			First Marine Brigade 5/40
Quebec/Canada (Quebec City)	46.8N	71.2W	Permit 6/37
Quepos Point/Costa Rica	09.4N	84.2W	Hannibal 4/33
Quincy/Mass	42.3N	71.0W	Elliot ?

Port Listings Letter "R" Relieve daily stress by spending time with your Naval Cover Collection. www.uscs.org



"Richmond, VA"

Ragusa/Yugoslavia (now Dubrovnik, Croatia)	42.6N	18.1E	McDougal 3/37
Rapallo/Italy	44.4N	09.2E	Badger 5/39
Rapello/Italy (Misspelled)			Jacob Jones 5/39
Rat Isl./Alaska	51.8N	178.3E	Kingfisher 5/35
Raymond/Washington	46.7N	123.7W	DuPont 7/35
Recife/Brazil	08.0S	34.9W	(Unknown)
Redondo/Beach Calif	33.8N	118.4W	Minneapolis 7/38
Redwood City/Cal	37.5N	122.2W	Dale 9/37
Rey Island/Perlas Is R.P. (Panama)	08.3N	78.8W	Moffett ?
Reykjavik/Iceland (correct spelling: Reykjavik)	64.2N	21.9W	Mississippi 10/41
Rhodes (as Island Rhodes)(Lindos)	36.0N	28.1E	Des Moines 7/15
Richmond/Virginia	37.5N	77.4W	Goff 2/33
Richmond*/*Va*			Leary 4/36
Riga/Latvia	56.9N	24.1E	Pittsburgh 8/23
Rio Colorado/Costa Rica	10.8N	83.6W	Hannibal 6/37
Rio de Janiero/Brazil (Misspelled)	22.9S	43.2W	Chester 1936
Rio De Jan-/eiro Bazil (Brazil misspelled)			Wainwright ?
Rio de/Janeiro			Sargo 4/29
Rio/de Janeiro			Ranger 9/34
Rio Grande/Nic	13.0N	83.6W	(Unknown)
Rio Grande/Sul Brazil (Rio Grande do Sul)	(Unspecified)		Walke 7/40
Rio Grande/Do Sul, Bazil (Brazil Misspelled)			Wainwright 7/40

Riverton/New Jersey	40.0N 75.0W	<i>Dunlap 7/38</i>
Rockland/Maine	44.1N 69.1W	<i>Gleaves 9/40</i>
Rockport/Me	44/2N 69.1W	<i>Leary 8/39</i>
Rockport/Mass	42.7N 70.6W	<i>Fox 8/36</i>
Rose/Island (Samoa)	14.5S 168.1W	<i>Ontario 3/39</i>
Rose Island/South Seas		<i>Whippoorwill 7/34</i>
Rose Spit/Alaska (NE tip of Haida Gwaii)	54.2N 131.7W	<i>Brooks 7/35</i>
Rosyth/Scotland	56.0N 03.4W	<i>Utah 7/22</i>
Rotterdam (as Netherland/Rotterdam)	51.9N 04.5E	<i>Jacob Jones 7/39</i>

Port Locations Letter "S" Share your duplicates with young people, build a new generation of Naval Cover Collectors by giving covers to youth groups or your grandchildren. www.uscs.org



"War Torn Shanghai"

Saigon/Indo China (Ho Chi Minh City Vietnam)	10.7N 106.7E	<i>Whipple 10/35</i>
Saigon/F –I –C		<i>Stewart 10/35</i>
Saigon FR/Indo China		<i>Barker 10/35</i>
Saigon/FR Indo China	10.8N 106.7E	<i>Smith Thompson 10/35</i>
Saigyin (Hsiang Yin, China)	28.3N 113.0E	<i>(Unknown)</i>
St Augustine Florida	29.9N 81.3W	<i>(Unknown)</i>
Saint Elmo/Bay Perlas (Panama)	08.4N 78.9W	<i>Fairfax 1/37</i>
St. George/Alaska (Pribilof Islands)	56.6N 169.6W	<i>Sirius 8/32</i>
St. George/Pribilof Is. (Pribilof)		<i>Capella 8/39</i>
St. George/Unalaska		<i>Vega 8/40</i>
St. Georges/Bermuda	32.4N 64.7W	<i>Colorado 7/24</i>
St. George's/Granada (Grenada)	12.1N 61.8W	<i>Trenton 4/30</i>
St. Jean De/Luz France	43.4N 01.7W	<i>Oklahoma 8/36</i>
St. Jean D Luz/France		<i>Hatfield 1/37</i>
St. Joe Florida (Port St. Joe)	29.8N 85.3W	<i>Constitution 3/32</i>
St. John/Hispanola (likely St. John, USVI)	18.3N 64.7W	<i>Tuscaloosa 12/40</i>
St. John's/Antigua	17.1N 61.8W	<i>Barracuda 12/36</i>
St. John's/N.B. (New Brunswick)	45.3N 66.1W	<i>MacDonough 6/35</i>
St. John's/Newfoundland	47.6N 52/7W	<i>Anderson 8/39</i>
Saint Kitts/VI (St. Kitts and Nevis)	17.4N 62.8W	<i>Florida 7/22</i>
St Louis (MO) (as Postmarked Aboard)	38.7N 90.2W	<i>Hazard ?</i>
St. Lucia/B.W.I. (Windward Islands)	13.8N 61.1W	<i>Warrington 5/38</i>
St. Mary's Md (as Flag Day/St. Mary's Md)	38.2N 76.4W	<i>Manley 6/34</i>
Saint Maxime/Sur-Mar-Var (France)	43.3N 06.6E	<i>Omaha 4/34</i>
St. Nazarre/France (Saint Nazaire)	47.3N 02.2W	<i>Badger 8/39</i>
St. Nazaire/France		<i>Hull 6/35</i>
St Nicholaas/Aruba (San Nicola)	12.4N 69.9W	<i>Seal 6/39</i>
St Nicholaas/Aruba, N.W.I.		<i>Pollack 7/37</i>
San Nicola/Aruba		<i>Fanning 1/35</i>
San Nicolo/Aruba (St. Nicholaas)		<i>Fanning 1/38</i>
St. Paul/Pribilof Is. (Pribilof)	57.1N 170.3W	<i>Capella 8/39</i>
St. Paul Is/Bering Sea		<i>Swallow 10/36</i>
St Paul Is/Unalaska		<i>Vega 8/40</i>
St Petersburg/Florida	27.8N 82.6W	<i>Rowan 2/40</i>
St. Petersburg/Fla		<i>Goff 3/32</i>
Sunshine City/St. Petersburg Fla		<i>Trenton 12/34</i>
St. Peters-/burg, Fla		<i>Taylor 10/34</i>

Navy Day at/St. Pete, Fla,			<i>Trenton</i> 10/34
COMSPESERV/St. Petersburg, Fla			<i>Trenton</i> 11/34
Labor Day/St. Pete-Fla			<i>Richmond</i> 9/34
St Pierre/Miquelon	46.9N	56.3W	<i>Monaghan</i> 9/35
St Pierre/Newfoundland (probably Miquelon)			<i>Monaghan</i> 9/35
St Thomas/Virgin Isle	18.3N	65.0W	<i>Greer</i> 8/36
St. Thomas/Virgin Is.			<i>Phelps</i> 5/36
St. Thomas/Virgin Isl.			<i>Tattnall</i> 8/37
St Thomas/V.I.			<i>Williamson</i> 7/34
St Thomas/West Indies			<i>Machias</i> 1917
St, Thomas			<i>Morris</i> 12/40
R.O.T.C. St. Thomas			<i>Dickerson</i> 6/35
St Thomas/St Croix V.I. (likely just St Croix)	17.7N	64.7W	<i>Phelps</i> 5/36
Saipan (as Navy Day/Saipan...type 9 with bars)	15.1N	145.8E	<i>Thomas Jefferson</i> 10/45
Saldovia/Alaska (Seldovia)	59.4N	151.7W	<i>Ortolan</i> 8/34
Salem/Mass	42.5N	70.9W	<i>Bernadou</i> ?
Salmen/Mass (Misspelled)			<i>MacKenzie</i> 9/40
Witch City/Salem, Mass			<i>Milwaukee</i> ?
Salina Cruz Mexico (Puerto Mexico)	16.2N	95.2W	<i>Chattanooga</i> 1914
Salinas/Ecuador	02.2S	80.9W	<i>Bushnell</i> 7/40
Salvador (as At Sea Off/Salvador) (El Salvador) (Unspecified)			<i>Pompano</i> 1/38
Samana/Bay D Rp (Dominican Republic)	19.2N	69.3W	<i>Teal</i> 2/35
Samoa (as Labor Day/Samoa)	14.3S	170.7W	<i>Whippoorwill</i> 9/34
Am Samoa/Tutuila			<i>Lark</i> 5/36
Samsun/Turkey	41.3N	36.4E	<i>Overton</i> 11/22
San Blas/Bay (Rio Tigre, Panama)	09.5N	78.8W	<i>Houston</i> ?
San Blas Is/R. De Panama			<i>Manley</i> 5/36
San Blas Mexico	21.5N	105.3W	<i>Pittsburgh</i> ?
Sancian Island (Shangchuan, China)	21.7N	112.8E	<i>Asheville</i> 1/37
Sancllemente/Island Cal (San Clemente)	32.8N	118.4W	<i>Bridge</i> 2/37
San Cleme/nte Is. Cal			<i>Indianapolis</i> 7/34
S.Clemente/Island			<i>Chicago</i> 10/36
San/Clemente			<i>Wyoming</i> 2/37
Sancllemente/S.R.B.P. (Short Range Battle Practice)			<i>Oklahoma</i> 9/35
Pyramid Cove/San Clemente Isle			<i>Northampton</i> 3/34
Wilsons Cove/San Clemente (Wilson Cove)	33.0N	118.5W	<i>Moffett</i> 11/37
Sandakan/Borneo (Malaysia)	05.8N	118.1E	<i>Northampton</i> 3/34
San Diego/California	32.7N	117.2W	<i>Stingray</i> 12/39
San Diego/Cal			<i>Brazos</i> 5/33
San Diego/Cal.			<i>Shark</i> 8/37
San Diego/Calif			<i>Montgomery</i> 10/37
Sandiego/Calif			<i>Humphreys</i> 9/38
Calif/San Diego			<i>Tattnall</i> 7/32
San Diego/*Bound*			<i>Relief</i> 5/35
Macon to/Camp Kearney			<i>Brooks</i> 8/34
Macon at Camp/Kearney San Diego			<i>Brooks</i> 11/34
Navy Day/Expo City 35 (San Diego)			<i>Borie</i> 10/35
Navy Day/S.D. Calif			<i>Broome</i> 10/33
San Diego/Navy Day			<i>Southard</i> 10/35
San Diego to/Pearl Harbor			<i>Kanawha</i> 11/39
NAS-FAD/San Diego			<i>VB Squadron 1-B</i> ?
Cal Pac Expo/San Diago Cal (Misspelled)			<i>Cole</i> 4/35
San Diego/Exposition			<i>Buchanan</i> 2/35

San Diego/Expo City			<i>Southard</i> 10/35
Columbus Day/Diego Calif (no San)			<i>Brooks</i> 10/34
San Diego (Xmas Day)			<i>Nautilus</i> 12/34
Christmas/S.D. Calif			<i>Broome</i> 12/32
Enroute/San Diego			<i>Snapper</i> 5/39
One Year Ann/San Diego, Cal			<i>Pollack</i> 1/38
Last Day/San Diego Cal			<i>McCormick</i> 9/38
Mothers Day/San Diego Cal			<i>Brooks</i> 5/34
Maritime Day/San Diego Cal			<i>Brooks</i> 5/34
Memorial Day/San Diego Cal			<i>Brooks</i> 5/34
Sand Point Alaska	55.3N	160.5W	<i>Sandpiper</i> 4/35
Sand Point/Wash	47.7N	122.2W	<i>Williamson</i> 6/40
San Francisco/California	37.7N	122.4W	<i>Leary</i> ?
Sanfrancisco/California			<i>Quincy</i> 10/36
San/Francisco			<i>Narwhal</i> 2/35
San Fran/California			<i>Milwaukee</i> 11/37
Fleet Week/San Francisco			<i>Oklahoma</i> 8/31
Fleet Week/S. Francisco			<i>Chicago</i> 8/36
U.S.Fleet/San Francisco			<i>Texas</i> 4/32
San Francisco/Pier 34	37.8N	122.4W	<i>Tarbell</i> 5/32
San Jose/Guatemala	13.9N	90.8W	<i>Erie</i> 6/39
San Jose Is/Perlas Is R.P. (Panama)	08.3N	79.2W	<i>Moffett</i> ?
San Juan/Puerto Rico	18.5N	66.1W	<i>Sandpiper</i> 1/39
San Juan/Porto Rico (Misspelled)			<i>Buchanan</i> 12/39
San Juan/Peurto Rico (Misspelled)			<i>Sims</i> 9/39
San Juan/Pueto Rico (Misspelled)			<i>Charleston</i> 4/37
San Juan/Pureto (Misspelled)			<i>George E. Badger</i> 3/40
San Juan/P.R.			<i>Sargo</i> 3/39
San Juan, P.R./1 st Cancel			<i>Satterlee</i> 2/40
San Luis/Calif (San Luis Obispo)	35.3N	120.7W	<i>Langley</i> 10/36
San Luis/Obispo			<i>Wright</i> 12/37
Sanoer/Bali NI (likely Sanur, near Denpasar)	08.7S	115.3E	<i>John D. Ford</i> 7/36
San Pedro/California	33.7N	118.2W	<i>Argonne</i> 8/36
San Pedro/Calif			<i>Medusa</i> 11/34
San-Pedro/*Calif*			<i>Honolulu</i> 6/39
Outer Harbor/San Pedro			<i>Maryland</i> 10/35
Flag Day/San Pedro			<i>Bobolink</i> 6/34
Hospital Ship/San Pedro, Calif			<i>Relief</i> 1/33
Hosp. Ship/San Pedro, Ca			<i>Relief</i> 1/34
Hospital Ship/San Pedro, Cal			<i>Relief</i> 1/34
Santa Barbara/Calif Ils	34.0N	119.)W	<i>Northampton</i> 9/35
Santa Barbara/Harbor (California)	34.4N	119.7W	<i>Constitution</i> 10/33
Santa/Barbara Cal			<i>Tennessee</i> 7/24
Santa Cruz/California	37.0N	122.0W	<i>Dale</i> 7/37
Santa Cruz/Harbor (California)			<i>Constitution</i> 9/33
Santa Cruz/Del Sur Cuba	20.7N	78.0W	<i>Hamilton</i> 9/33
Santa Elena Ecuador	02.2S	80.9W	<i>Wright</i> 2/36
Santa Monica/Calif	34.0N	118.5W	<i>Mahan</i> 7/34
Santa Monica/Harbor			<i>Constitution</i> 10/33
Santander/Spain	43.5N	03.8W	<i>Aylwin</i> 6/35
Aids Refugees/Santander Spain			<i>Kane</i> 10/36
Santelmo/Perlas Is. (likely San Telmo Island)	08.3N	78.8W	<i>Helm</i> 3/38
Santiago/Cuba	20.0N	75.8W	<i>Tillman</i> 11/33

Santiago/Galapagos Isl (James Island)	00.3S	90.7W	<i>Taylor</i> 12/37
Santo Domingo/R. D. (Dominican Republic)	18.5N	69.9W	<i>Memphis</i> 1916
Santos/Brazil	24.0S	46.3W	<i>Louisville</i> 11/40
Sanur/Bali	08.7S	115.3E	<i>Pillsbury</i> 9/36
Sanur Roads/Bali			<i>Augusta</i> ?
Sanoer/Bali NI (Sanur misspelled)			<i>John D. Ford</i> 7/36
Saona/Island (Isla Saona, Dominican Republic)	18.1N	68.7W	<i>Houston</i> 2/39
Sarana Bay/Attu Island	52.9N	173.3E	<i>Oglala</i> 5/34
Sarangani/Island PI	05.4N	125.5E	<i>Marblehead</i> 4/38
Sarawak/Borneo (actually State in Malaysia)	03.1N	112.7E	<i>Canopus</i> 5/38
Sardinia (as At Sea/Off Sardinia)	(Unspecified)		<i>Manley</i> 11/37
Sasebo/Japan	33.1N	129.7E	<i>Nereus</i> 3/46
Sasebo/Kyushu			<i>Alcyone</i> 2/46
U.S. Navy/Sasebo Japan			<i>Palawan</i> 2/46
Sausalito/California	37.9N	122.5W	<i>Thrush</i> 5/37
Savannah/Georgia	32.1N	81.1W	<i>Dickerson</i> ?
Savannah/Ga.			<i>Sailfish</i> 12/40
Scapa Flow/Orkney Is.	58.9N	03.0W	<i>U.S. Navy</i> 8/42
Scituate/Mass	42.2N	70.7W	<i>Dorsey</i> 7/34
Seal Cay/Honduras (now Belize)	16.4N	88.4W	<i>Hannibal</i> 3/14
Seal Cove NS (as Pres Cruise/Seal --)	45.9N	61.1W	<i>Potomac</i> 7/36
Seal Island (as Pres Cruise/Seal --)(Maine)	43.9N	68.7W	<i>Potomac</i> 7/36
Seattle/Washington	47.6N	122.3W	<i>Constitution</i> 6/33
*Fleet*Week*/Seattle-Wash			<i>Northampton</i> 7/33
Fleet Week/Seattlewash			<i>Northampton</i> 7/35
Seattle/Fleet Week			<i>Pennsylvania</i> 8/35
Seattle/Wash			<i>Hatfield</i> 6/33
Seattle, Wn/Fleet Week			<i>Borie</i> 7/35
Pier 41/Seattle Wn.			<i>Thrush</i> 10/36
S. N. Y./Wash (Seattle Navy Yard)			<i>Spica</i> 1945 or 46
Segula Isl/Alaska	52.1N	178.2E	<i>Kingfisher</i> 5/35
Seine Bay/Culebra (Island Puerto Rico)	18.5N	65.4W	<i>Taylor</i> 1/36
Seldovia/Alaska	59.4N	151.7W	<i>Roper</i> 2/36
Seldova/Alaska (Misspelled)			<i>Ranger</i> 1/36
Semisopchnoi/Alaska (an island)	52.0N	179.5E	<i>Sandpiper</i> 7/35
Seville/Spain	37.4N	06.0W	<i>Dickerson</i> 7/40
Seward/Alaska	60.1N	149.4W	<i>Chicago</i> 7/37
Seydisfjord/Iceland	65.3N	14.0W	<i>Tuscaloosa</i> 8/42
Sfax/Tunisia	34.7N	10.8E	<i>Pittsburgh</i> 1/25
Shakan Bay/Alaska	56.1N	133.6W	<i>Hull</i> 7/36
Shamen/Canton (China)	23.1N	113.2E	<i>Asheville</i> 3/24
Shanghai/China	31.2N	121.5E	<i>Asiatic Fleet</i> 6/39
Shanghai/N. China			<i>Black Hawk</i> 10/36
Shanghai/Kiangsi, China			<i>Oahu</i> 5/36
Navy Day/Shanghai			<i>Augusta</i> 10/36
War Torn/Shanghai			<i>Finch</i> 10/37
Shangi/China (Misspelled)			<i>Augusta</i> 10/35
Shamghai/China (Misspelled)			<i>Tulsa</i> 5/31
Shanghai Chn/Christmas			<i>Rochester</i> 12/32
Shasi/China (Shashi)	30.3N	112.3E	<i>Tutuila</i> 11/35
Shasi/Hupeh China			<i>Oahu</i> 11/32
Shaze/China (likely Shasi)			<i>Monocacy</i> 2/35
Shimonoseki/Strait (Kanmon Strait)	34.0N	130.6E	<i>Augusta</i> 6/36

Siang-yin (Hsiang Yin)(Xiangyin)	28.7N	112.9E	<i>Guam</i> 1930
Sibuyan Sea/Passage	13.0N	122.5E	<i>Marblehead</i> 4/38
Simonstown/So. Africa	34.2S	18.4E	<i>Louisville</i> 1/41
Singapore/Str' Setl'n'ts	01.5N	103.8E	<i>Borie</i> 10/30
Singapore/S.S. (Straits Settlement)			<i>Maury</i> 2/38
Singapore/St. Stlmts			<i>Black Hawk</i> 11/36
Singapore/Maylaya Str S (Misspelled)			<i>Trinity</i> 2/39
Singapore/Br. Malaya			<i>Tennessee</i> 10/45
Gate of the Far East			<i>Augusta</i> 10/35
Sinti (Hsin-ti) China	29.8N	113.5E	<i>Oahu</i> 1/31
Singti/China (Likely Sinti)			<i>Tutuila</i> 2/24
Sinhowkow/Hupeh China			<i>Oahu</i> 3/32
Sitka/Alaska	57.1N	135.3W	<i>Chester</i> 7/39
F.A.B. Sitka/Alaska			<i>Sandpiper</i> 6/38
Skagway/Alaska	59.5N	135.3W	<i>Trever</i> 7/33
Smyrna/Turkey (now Izmir)	38.3N	27.1E	<i>Eagle One</i> 1919
Soapstone/Alaska	58.1N	136.5W	<i>Teal</i> 8/38
Soapstone Pt/Alaska			<i>Swallow</i> 1934
Socorro/Islands (Mexico)	19.0N	111.0W	<i>Houston</i> 7/38
Soerabaya/Java (see Surabaya)			
Solomons/Md	38.3N	76.5W	<i>Walke</i> 11/40
Sombrero/Island (UK) (east of British V.I.)	18.6N	63.4W	<i>Philadelphia</i> 5/38
South America (as Presidential/Cruise S. Amer) (Unspecified)			<i>Chester</i> 11/36
Southampton/England	50.9N	01.4W	<i>Dale</i> 8/35
Southampton/for Naples			<i>Dale</i> 8/35
Southampton, England			<i>Houston</i> 9/31
South Brooklyn NY	40.6N	74.0W	(Unknown)
South or Southern California			
Macon Over/So. California	(Unspecified)		<i>Relief</i> 2/34
Off So. Calif/With USS Macon			<i>Grebe</i> 1/34
South China/Patrol	(Unspecified)		<i>Mindanao</i> 4/32
Southern Drill/Grds- -Off Va	(Unspecified)		<i>Grebe</i> 9/34
So. Drill/Grounds			<i>Nashville</i> 7/38
Southern/Philippines	(Unspecified)		<i>Bittern</i> 5/38
Southern Waters	(Unspecified)		<i>Delaware</i> 3/20
USS Macon/In So. Waters			<i>Pennsylvania</i> 4/34
Southport/North Car.	33.9N	78.0W	<i>Raleigh</i> 5/31
Southport/NC			<i>Perch</i> 1/37
Spacious Bay/Alaska	51.3N	131.1W	<i>Brooks</i> 7/35
Spain (as Bomb Attack/Off S.W.Spain)	36.5N	06.3W (Approximate)	<i>Kane</i> 8/36
Spalto/Dalmatia (Spalato)	43.5N	16.6E	<i>Olympia</i> 5/19
Spalto/Jugoslavia (Yugoslavia)			<i>Smith Thompson</i> 8/37
Spanish/Coast	(Unspecified)		<i>Quincy</i> 9/36
Spithead/England	50.8N	01.1W	<i>New York</i> 5/37
Spitsbergen/Norway	80.0N	14.0E	<i>Tuscaloosa</i> 10/43
Sq Drill/Grounds (Southern Drill Grounds)			<i>Nashville</i> 7/38
Squantum/Mass	42.3N	71.0W	<i>Gannet</i> 8/35
Stamford/Conn	41.0N	73.5W	<i>New Orleans</i> 7/36
Stapleton/NY	40.6N	74.1W	<i>Philip</i> 9/31
Staten/Island (NY)	40.5N	74.1W	<i>Bernadou</i> 2/34
Stockholm/Sweden	59.3N	18.0E	<i>Nashville</i> 9/38
Stockton/California	38.0N	121.3W	<i>Perkins</i> 8/37
Stockton/Calif			<i>Aylwin</i> 10/35

Navy Day/Stockton CA			<i>Hull 10/35</i>
Straits of Gibraltar (see Gibraltar)			
Straits of/Magellan	53.5S	70.7W	<i>Quincy 5/39</i>
Strait San/Bernardino	12.6N	124.0E	<i>Marblehead 4/38</i>
Subic Bay/PI	14.8N	120.2E	<i>Parrott 2/41</i>
Submerged Circumnavigation (Cachet)			<i>Triton 1960</i>
Suez/Egypt	29.9N	32.5E	<i>Sacramento 3/39</i>
Sullivan Bay/Galapagos	00.3S	90.5W	<i>Erie 12/38</i>
Sulu Sea (Southern Philippines)	08.6N	119.4E	<i>Augusta 5/35</i>
Sunda/Straits (Selat Sunda, Indonesia)	05.9S	105.9E	<i>Trenton 2/38</i>
Sunshine City (see St. Petersburg)			
Surabaya/Java N.E.I	07.3S	112.7W	<i>Canopus 5/38</i>
Soerabaya/Java (Surabaya)			<i>Pope 12/36</i>
Sourabaya/Java			<i>John D. Ford 12/36</i>
Suva/Fiji Islands	18.1S	178.4E	<i>Smith 3/37</i>
Swains/Island (American Samoa)	11.0S	171.0W	<i>Mauzy 10/38</i>
Swains Isl/Samoan Gr.			<i>Bushnell 10/39</i>
Swan Island/Honduras	17.5N	84.0W	<i>Hannibal 1/14</i>
Swan Island (as National Oceanographic/Expedition/Swan Island)			<i>Explorer 6/60</i>
Swampscott/Mass	42.5N	70.9W	<i>Southard 7/34</i>
Swatow/China (Shantou)	23.4N	116.7E	<i>Smith Thompson 5/32</i>
Sweden (as Shakedown/to Sweden)	(Unspecified)		<i>New Orleans 5/37</i>
Sydney/Australia	33.9S	151.2E	<i>Preston 3/37</i>
Sydney Isl/Samoan Gr. (Manra Island, Kiribati)	04.5S	171.4W	<i>Bushnell 10/39</i>

Port Listings Letter "T" There are few hobbies as rewarding as Collecting Naval Covers. www.uscs.org



"Victory, Tacoma, Wash, Navy Day"

Taboga/Island R. P.	08.8N	79.6W	<i>Fairfax 8/36</i>
Tabogo Isl/Rep Pan (Misspelled)			<i>Mugford 10/38</i>
Taboguilla/Island CZ	08.8N	79.5W	<i>Kanawha 5/36</i>
Tacloban/P.I.	11.2N	125.0E	<i>Augusta 3/36</i>
Tacoma/Washington	47.3N	122.4W	<i>Constitution 6/33</i>
Fleet Week/Tacoma, Wa			<i>Chicago 7/36</i>
Tacoma/Wash			<i>Brooks 7/33</i>
Victory/Tacoma, Wash/Navy Day			<i>Maryland 10/45</i>
Taft/Va	37.6N	76.4W	<i>Buck 7/40</i>
Tagus Cove/Galapagos (see Galapagos)			
Taiwan/Kaikyo (Japanese name)	(Unspecified)		<i>Augusta 10/35</i>
Off Taiwan/Formosa			<i>Finch 9/35</i>
Taku Bar/China	39.0N	117.8E	<i>Houston 8/32</i>
Taku Glacier/Alaska	58.3N	134.1W	<i>Crowninshield 6/34</i>
Taku Inlet/Alaska			<i>Aylwin 7/38</i>
Talara/Peru	05.0S	81.3W	<i>Sumner 11/40</i>
Tampa/Fla	28.0N	82.5W	<i>Constitution 4/32</i>
Shakedown/Tampa Fla (Misspelled and w upside down)			<i>Seawolf 4/40</i>
Tampico/Mexico	22.2N	97.8W	<i>New Hampshire 10/12</i>
Tanaga Island	51.8N	177.9W	<i>Tanager 6/34</i>
Tanaklak/Aleutians	52.0N	176.1W	<i>Oglala 7/34</i>
Tandjong-/priok Java (Tandjong Priok)	06.1S	106.9E	<i>Asiatic Fleet ?</i>

Tangier/Morocco	35.8N	05.8W	<i>Claxton</i> 3/38
Tangku/China (Tang Ku)	39.0N	117.7E	<i>John D. Ford</i> 7/36
Tanovogriok/Java (perhaps Tandjong Priok)	06.1N	106.9E	<i>Unknown</i>
Tarakan/Borneo	03.3N	117.7E	<i>John D. Ford</i> 12/36
Tasmania (as Passing Tasmania)	(Unspecified)		<i>Trenton</i> 2/38
Tate/Island (Unknown location, multiple geographic listings)			<i>(Unknown)</i>
Tau/Island (American Samoa)	14.3S	169.5W	<i>Maury</i> 10/37
Ta'u Is/Manu'a Gr.			<i>Ontario</i> 8/38
Ta'u Manua/Samoa			<i>Whippoorwill</i> 3/34
Tawi Tawi/P.I.	05.1N	120.2E	<i>Pecos</i> 3/37
Tela Honduras	15.8N	87.5W	<i>Sacramento</i> 6/31
Thames River (as Xmas on Thames)	51.5N	00.5E	<i>Roper</i> 12/36
(Note: Above unlikely genuine cancel. <i>Roper</i> was in Alaska in February 1936 and California in January 1937.)			
The Knuckle/Lat39Long47	39.0N	47.0W	<i>Arkansas</i> 6/35
(Note: "The Knuckle" is located about 1100 miles east southeast of Prince Edward Island. Possibly a maneuver area.)			
364 Miles Above/Hankow China (see Hankow)			
Tientsin/China	39.1N	117.2E	<i>Smith Thompson</i> 9/39
Tiger/Island (Panama)	09.4N	78.5W	<i>Houston</i> 10/35
Tobermory/Mull Island (Scotland)	56.6N	06.1W	<i>Bristol</i> 7/42
Tokyo	35.6N	139.8E	<i>Gardiners Bay</i> 1/46
Tokyo/Bay/Japan			<i>Piedmont</i> 11/45
Tokio/Bay (Spelling variant)			<i>Shangri-La</i> 9/45
Off/Tokyo			<i>Samuel N. Moore</i> ?
Tokyo/Bay			<i>Topeka</i> 9/45
Tompkinsville/Staten Isl N. Y.	40.6N	74.1W	<i>Briarcliff</i> 8/35
Tongoy Chile (as Anchored/Tongoy Chile)	30.3S	71.5W	<i>Babbitt</i> 3/33
Tongue Pt./Astoria Oregon	46.2N	123.7W	<i>Constitution</i> 7/33
Torquay/England (Torbay)	50.4N	03.5W	<i>New York</i> 7/37
Tortuga/Island (near Cap Haitien, Haiti)	20.1N	72.7W	<i>Woodcock</i> 10/33
Toulon/France	43.1N	05.9E	<i>Shaw</i> 6/37
Tourane/Indo China (Da Nang, Vietnam)	16.1N	108.2E	<i>Black Hawk</i> 10/35
Treasure/Island Cal (San Francisco Bay)	37.8N	122.4W	<i>Downes</i> 7/39
Trans Bay/Bridge (see Bay City)			
Trelleborg (Sweden)	55.4N	13.1E	<i>Reuben James</i> 2/22
Trenton/NJ	40.2N	74.8W	<i>Trever</i> 7/34
Trenton NJ/Labor Day			<i>Reuben James</i> 9/34
Trieste/Italy	45.7N	13.8E	<i>McDougal</i> 3/37
Trinidad/BWI (British West Indies)	10.8N	61.3W	<i>Unknown</i>
Trujielo/Dom' Republic (Misspelled, now Santo Domingo)	18.4N	70.0W	<i>Buck</i> 8/40
Trujillo/Honduras	15.9N	86.0W	<i>Lapwing</i> 9/35
Trujillo Bay/Honduras			<i>Toucy</i> 1929
Tsingtao/China (Quindao)	36.0N	120.3E	<i>Finch</i> 7/35
Tsingtau/China (alternate spelling)			<i>Paul Jones</i> 10/34
Tingtao/China (Misspelled)			<i>Bulmer</i> (8/30)
Tsingkiang/China (Jinjiang)	24.9N	118.6E	<i>Monocacy</i> 7/36
Tulagi/Solomons	09.1S	160.1E	<i>Ortolan</i> 12/42
Tumaco/Colombia	01.8N	78.8W	<i>Trenton</i> 8/35
Tunas/Cuba (likely Puerto Padre, Las Tunas)	22.2N	76.6W	<i>Paducah</i> 5/16
Tungchow/China (Chongchuan)	32.0N	120.8E	<i>Oahu</i> 2/38
Tunis/Africa (Tunisia)	36.8N	10.2E	<i>Flusser</i> 12/36
Turbo/Colombia	08.1N	76.7W	<i>Bushnell</i> 5/38
Turks/Dardanelles	40.2N	26.4E	<i>Reina Mercedes</i> 4/35

Turks Isl/Christmas (Bahamas)	21.8N 71.3W	Wainwright 12/40
Tutu Bay/P.I. (south coast of Jolo Island)	05.9N 121.2E	Whipple 5/41
Tutuila/Am. Samoa	14.3N 170.7W	Ontario 9/38
Tutuila/Am Samoa (no period)		Ontario 8/38
Tutuila/Samoa		Whippoorwill 3/34
Aoloua/Tut/tuila Samoa		Whippoorwill 7/34
Am. Samoa/Tutuila		Lark 5/36
At/Tutuila		Lark 5/36
Tuxpam (sic, should be Tuxpan)/Mexico	20.9N 97.4W	Tacoma 10/1913

Port Listings Letter "U" Unalaska may be hard to visit in person, but through collecting Naval Covers, you can!

www.uscs.org



"Unalaska, Alaska"

Umak Bight/Alaska	51.8N 176.0W	Quail 8/34
Umnak Island	53.2N 168.4W	Gannett 6/35
Umnak Bight	53.4N 167.8W	Quail 8/34
Unalaska/Alaska	53.9N 166.5W	Partridge 7/39
Unalaska/Aleutian Is.		Swallow 9/34
Unga Strait/Alaska	55.4N 160.7W	Porpoise 4/38
Upham/Canal Zone (Coco Solo)	09.4N 79.9W	Clemson 9/40
Uvalde Aleutians Alaska	(Unknown location)	(Unknown)

Port Locations Letter "V" Vibrant hobby is Naval Cover Collecting. www.uscs.org



"Veracruz, Mexico"

Valencia/Spain	39.4N 00.3W	Dale 10/35
Valencia/Espania (Espana Misspelled)		Raleigh 11/36
Vallejo/California (See also: Mare Island)	38.1N 122.3W	Alden 5/34
Vallejo/Calif		McCormick 11/35
Navy Yard/Vallejo, Ca		Indianapolis ?
Valletta/Malta	35.9N 14.5E	Omaha 5/38
Valparaiso/Chile	33.0S 71.6W	Maryland 12/30
Vancouver/BC (British Columbia)	49.3N 123.1W	Concord 7/36
Vancouver/B-Columbia		Oklahoma 9/39
Vancouver/Washington	45.6N 122.6W	Kane 7/35
Varna/Bulgaria (See also Bulgaria)	43.2N 27.9E	Eagle One 3/20
Vela De Cora/Venezuela (La Vela)	11.5N 69.6W	Bushnell 5/40
Venice Calif/Armistice Day (Marina del Rey)	34.0N 118.4W	Milwaukee 11/36
Venice/Italy	45.4N 12.3E	Coghlan 4/26
Venice		Ernest G. Small 6/40
Ventura (as City of Ventura)(San Buenaventura)	34.2N 119.3W	Houston 6/37
Ventura Harbor		Constitution 10/33
Vera Cruz/Mexico	19.2N 96.1W	Michigan 6/14
Vera Cruz to/Philadelphia		Kentucky 5/16
Veracruz/Mexico		Sterett 11/39
Verde Island/Passage (Philippines)	13.6N 120.9E	Marblehead 4/38
Vicalon/Panama (possibly Colon)		(Unknown)

Victoria/B.C.	48.4N	123.4W	<i>San Francisco</i> 6/34
Victoria/Hong Kong (see Hong Kong)			
Vieques/P.R. (Puerto Rico)	18.2N	65.5W	<i>Texas</i> 3/39
Viequez/Sound (Vieques)			<i>Detroit</i> 3/24
Vigo/Spain	42.2N	08.7W	<i>Oklahoma</i> 8/36
Villamil/Galapagos (town of Albemarle)	01.0S	91.0W	<i>Erie</i> 12/38
Villefranche/France (Villefranche-sur-Mer)	43.7N	07.3E	<i>Case</i> 5/37
Villafrance/France (Misspelled)			<i>Arkansas</i> 7/35
Villefrance/France (Misspelled)			<i>Des Moines</i> 1916
Ville/Franche			<i>Dale</i> 9/35
Villefranc (Misspelled)			<i>Omaha</i> 6/39
Vil'franche/France			<i>Wyoming</i> 7/34
Virginia Capes (as At Sea/Off Va. Capes)	36.8N	75.3W (Approximately)	<i>Ranger</i> 8/34
Virginia Coast (as Off Va Coast/Fired S.R.B.P.)	36.8N	75.3W (Approximately)	<i>Texas</i> 8/34
(SRBP=Short Range Battle Problem)			
Virgin/Islands	18.4N	64.8W (Approximately)	<i>Wyoming</i> ?
Vivorilla Cay/Honduras (Vivora)	15.8N	83.3W	<i>Hannibal</i> 2/14
Vladivostok/U.S.S.R. (Russia)	43.1N	131.9E	<i>Augusta</i> 7/37
Vladivostok/Siberia			<i>Whipple</i> 7/37
Enroute/Vladivostok			<i>Augusta</i> 7/37

Port Listings Letter "W" When was the last time you invited someone to join USCS? www.uscs.org



"Wuchow, China"

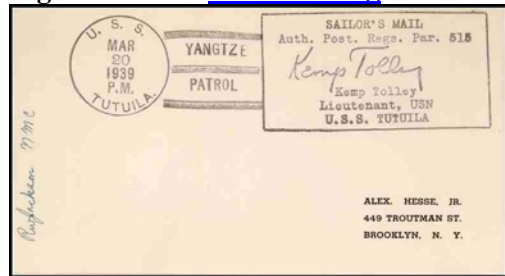
Waikiki Hawaii (as Aloha/Waikiki)	21.3N	157.8W	<i>Relief</i> 5/35
Wakayama/Honshu	34.2N	135.1E	<i>Suwanee</i> 9/45
Wakayama/Japan			<i>California</i> 10/45
Wake/Island	19.2N	166.7W	<i>Henderson</i> 1/36
Wake Island/Mid Pacific			<i>Chaumont</i> 8/33
Wake Island/Abeam			<i>Chaumont</i> 1/35
Wake Island/Abeam 1240 PM			<i>Chaumont</i> 11/34
Wake Island/Abeam 8PM			<i>Chaumont</i> 6/34
Wake Island/Abeam 5-40			<i>Chaumont</i> 3/36
Wake Island/Xmas Day			<i>Chaumont</i> 12/33
Wake/In View			<i>Henderson</i> 3/37
Wake Is/Hawaii Bound			<i>Henderson</i> 3/37
Wake Island/Clipper Mail			<i>Ramapo</i> 1/36
Passing/Wake Island			<i>Trenton</i> 3/38
Wanhsien/China (Wan-Hsien-Shih)	30.8N	108.4E	<i>Guam</i> 11/33
Washington/DC	38.9N	77.0W	<i>Cormorant</i> 5/33
Navy Day/Wash'n (DC)			<i>Dale</i> 10/35
Washington/Island (Teraina, Kiribati)	04.8N	160.3W	<i>Swordfish</i> 12/39
Wehaiwei/China (Quindao)	37.5N	122.2E	<i>Parrott</i> 9/40
Weihowei/China (Misspelled)			<i>Canopus</i> 9/35
Weiyuankow		(Unknown location)	<i>Panay</i> 11/29
Welles Bar/Midway (see Midway)			
West Coast (as At Sea for/West Coast)		(Unspecified)	<i>Perry</i> 9/34
West Indies (as U.S.S. Macon/West Indies)		(Unspecified)	<i>Texas</i> 5/34
West Point/NY	41.4N	73.9W	<i>Decatur</i> 7/38
West River/South China (Xi River)	22.5N	113.4E	<i>Mindanao</i> 5/35
Weymouth/England	50.9N	02.4W	<i>Florida</i> 7/29

Whale Pass/Alaska	56.1N 133.3W	<i>Swallow</i> 9/34
Whaling City (see New Bedford, MA)		
Whangpoo River (China)(Hwangpoo)	31.4N 121.5E	<i>Augusta</i> 4/35
Whansoo/China (possibly Changsha)	28.4N 112.9E	<i>Monocacy</i> 2/35
Willemstad/Curacao NWI	12.1N 68.9W	<i>Perch</i> 3/39
Willhelmstad/Curacao (Misspelled)		<i>Hammann</i> 10/39
Millemstad/Curacao (upside down W)		<i>Wright</i> 7/35
Willestad/Curacao (Misspelled)		<i>Tucker</i> 5/37
Willemstadt/Curacao (Misspelled)		<i>Sims</i> ?
Willenstad/Curacao (Misspelled)		<i>Hammann</i> 10/39
Wilmington/California	33.5N 118.3W	<i>Kanawha</i> 4/38
Wilmington/Deleware (Misspelled)	39.7N 75.5W	<i>Selfridge</i> 10/37
Wilmington, NC	34.3N 78.0W	<i>Constitution</i> 11/31
Wilsons Cove/San Clemente (California)	(see San Clemente)	
Wind Box/Gorge (QuTang Gorge)	31.0N 109.5E	<i>Oahu</i> 6/34
Woosung/China (Wu Sung)	31.4N 121.5E	<i>Henderson</i> 12/38
Wrangell/Alaska	56.5N 132.4W	<i>Zane</i> 7/33
Wrangell NR/Alaska		<i>Aylwin</i> 7/38
Wreck Bay/Galapagos	01.0S 89.5W	<i>Erie</i> 12/38
Wuchow/China	23.5N 111.3E	<i>Mindanao</i> 12/33
Wuhu/China	31.4N 118.3E	<i>Luzon</i> 3/39
Wusen/China (likely Wushan)	30.6N 114.3E	<i>Luzon</i> 3/39
Wushan/Sze./China (Szechuan)	30.6N 114.3E	<i>Oahu</i> 5/32
Wusiasien/China (Wuxi)	31.5N 120.3E	<i>Luzon</i> 11/36
Wusien/China (Soochow or Suzhou)	31.3N 120.4E	(Unknown)
Wusueh/China (Wuxue)	29.9N 115.6E	<i>Luzon</i> 11/36

Port Listing Letter “X” Xmas Island is the only known possibility for the letter X. Any collector finding another wins a prize! www.uscs.org

Passing/Xmas Island (Christmas Island, Kiribati) 10.5S 105.7E *Trenton* 2/38

Port Listings Letter “Y” Youth are the future of Naval Cover Collecting. Find a way to connect with youth organizations. www.uscs.org



“Yangtze Patrol”

Yukatat/Alaska	59.5N 139.7W	<i>Monaghan</i> 7/38
Yukatat Bay/Als		<i>Worden</i> 7/36
Yanchi/China	30.3N 111.6E	<i>Tutuila</i> 11/35
Yanglo/China (Chusan, China)	30.0N 122.2E	<i>Isabel</i> 1939
Yanglo/Beacon		<i>Isabel</i> 4/39
Yangtze/Patrol (also used with various port names)		<i>Tutuila</i> 1/39
Yarmouth (as Pres Cruise/Yarmouth)(MA)	41.7N 70.3W	<i>Potomac</i> 7/35
Yellow/Sea	(Unspecified)	<i>Salt Lake City</i> 6/40
Yerba Buena Isl. (as Anchored off/---)	37.8N 122.4W	<i>Grebe</i> 7/35
Yes Bay/Alaska	56.0N 131.7W	<i>Monaghan</i> 7/38
Yesiba Alaska	(Unable to identify)	(Unknown)
Yochow/Hun China (Yueyang)	29.4N 113.1E	<i>Oahu</i> 12/31
Yoke Cove/Aleutians (Great Sitkin Island)	54.5N 176.0W	<i>Oglala</i> 7/34
Yoko Cove/Alaska (Misspelled)		(Unknown)

Yokohama/Japan	35.5N 139.7E	<i>Gold Star 8/35</i>
U.S. Navy/Yokohama		<i>Bulmer 11/37</i>
Yokosuka/Japan	35.3N 139.7E	<i>Holland 3/46</i>
Yonkers/N.Y.	40.9N 73.9W	<i>Salt Lake City 6/34</i>
Yorktown/Virginia	37.2N 76.5W	<i>Hammann 9/39</i>

Port Listings Letter "Z" Zeppelin (air ship) collecting is a popular topic of Naval Cover Collecting (especially USS Macon & USS Akron). www.uscs.org



”Long. 0 00 00, Lat. 50 30 25 (Zero Meridian or Equator)

Zaikof Bay/Alaska	60.3N 147.0W	<i>Swallow 9/35</i>
Zamboanga/Mindanao P.I.	06.9N 122.1E	<i>Augusta ?</i>
Zamboanga		<i>Chester 11/35</i>
Zamboanga/P.I. (Misspelled)		<i>Smith Thompson 4/35</i>
Zamboanga/Southern PI		<i>Tulsa ?</i>
Zero Meridian (as crossing “0” Meridian)		<i>Honolulu 9/38</i>
Long 0-00-00/Lat 50-31-25		<i>Monaghan 10/35</i>

